

User Manual

Suitable For Screen



Product features

1. Wireless Carplay & Android auto connection
2. Support wired Carplay & Android auto
3. Support USB audio and video playback function
4. Keep all original car features, reverse/front view, PDC function, etc
5. Free switch between original car system and Carplay system
6. Plug and Play, installation without coding or slicing OEM wires
7. Control by OEM joystick and steering wheel buttons
8. Supports wired & wireless function for Android and iPhone

Wireless Android auto connection

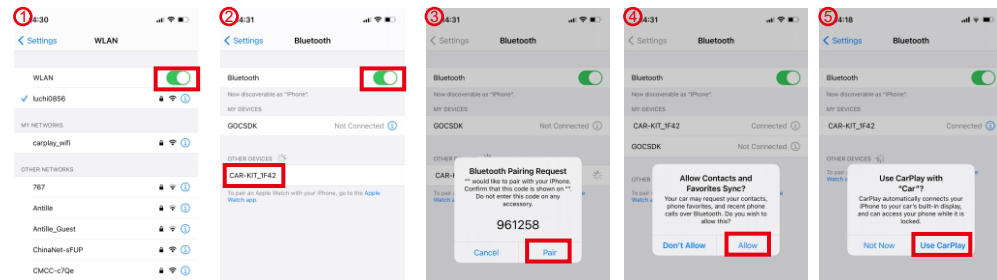
1. Download Android auto APP authorized by google on your phone.
2. Turn on Wifi on the phone.
3. Search and pair the Bluetooth 'CAR-KIT-A3A8'.
4. Allow all the permissions on the Android phone, then connect.

Wireless Carplay connection

1. Turn on Wifi on the iPhone.(①)
2. Turn on Bluetooth on the iPhone, search carplay's Bluetooth.(②)
3. Pair the Bluetooth.(③)

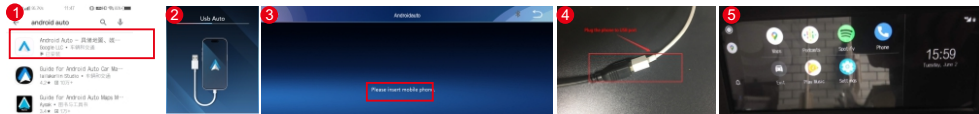
4. After successful Bluetooth pairing, select 'Allow' and Use 'Carplay' .(④⑤)

5.Connected to Carplay successfully, the screen will automatically enter the Carplay interface.



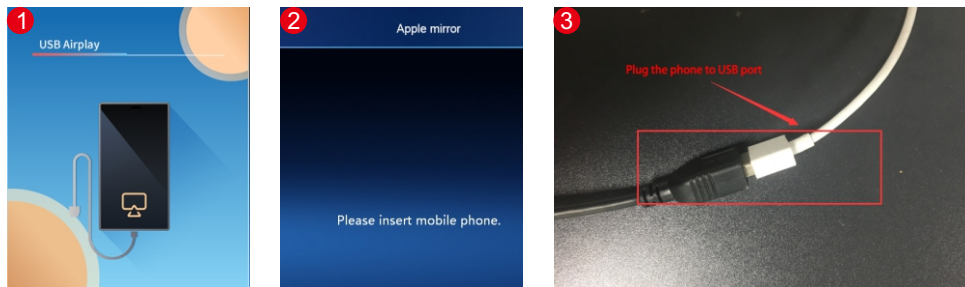
Wired Android auto connection

1. Download Android auto APP authorized by google on your phone.
2. Click 'USB auto' icon.
3. Click 'Reconnect', then Android auto will be connected and enter Android auto interface.
4. Connect your phone to the USB port via USB cable.



Wired Airplay connection

1. Click 'USB Airplay'.
2. Get a prompt to connect our phone.
3. Connect your phone to the USB port via USB cable.



USB audio and video function

Audio format support: MP3, WMA

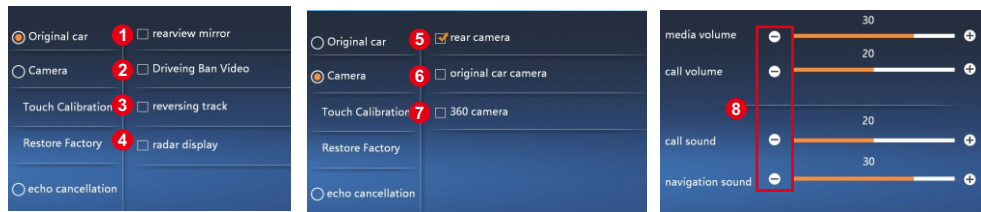
Video format support: MP4, AVI, MPG, 3GP, FLV, MOV, MKV

1. Copy the audio or video file to the root of USB flash drive (FAT32).

2. Click 'Music' or 'Video' icon to open the file.

Note: U disk cannot contain folders, or audio and video files will not be recognized.

Setting

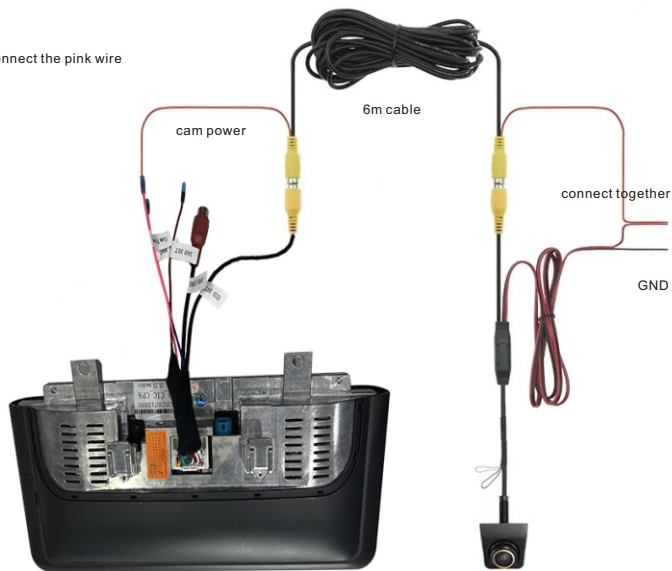
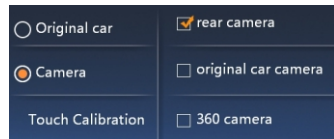


1. When the reverse image is reversed, set this setting ON
2. Turn on this setting, the video cannot be played while driving
3. Turn on or off the reverse track
4. Turn on or off the reverse radar
5. If use original camera, choose this option
6. If use aftermarket camera and connect camera power cable, set this option ON
7. If use aftermarket camera and connect reversing detection cable, set this option ON
8. Volume adjustment

Aftermarket camera connection method

Automatic transmission

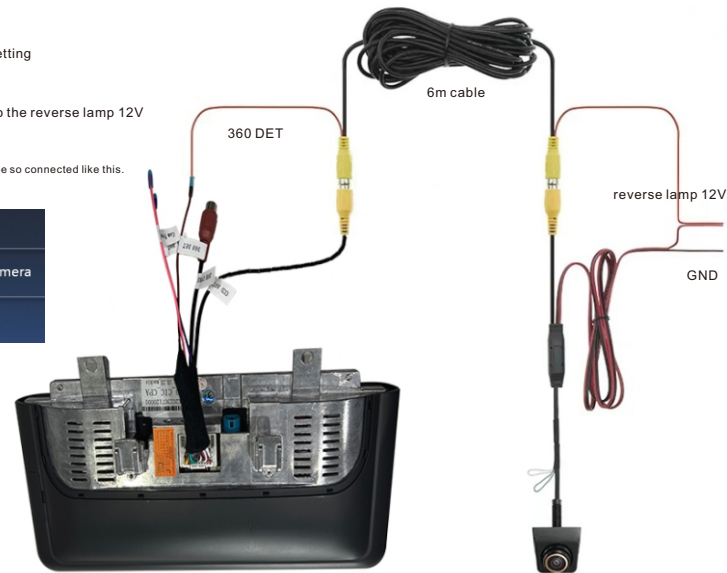
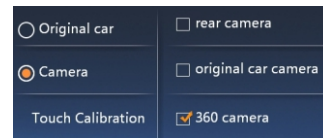
- 1 Select the rear camera in the camera setting Connect the pink wire
- 2 (cam power) to the camera
- 3 Connect the trunk camera power wire together
(connect these two red cables together)

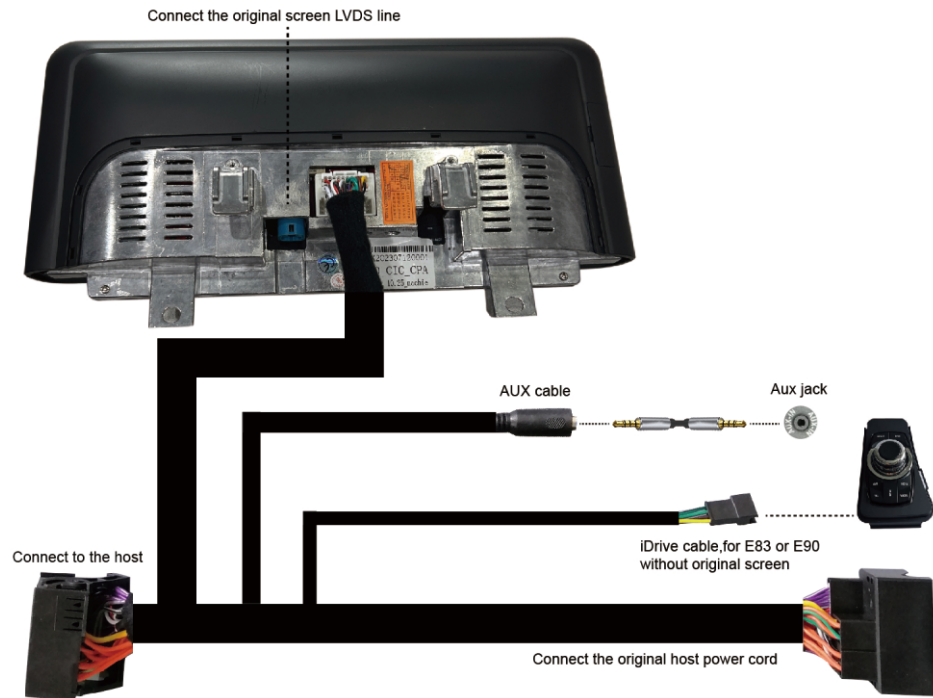


Manual transmission

- 1 Select the 360 camera in the camera setting
- 2 Connect the brown wire (360 DET)
- 3 Connect the trunk camera power wire to the reverse lamp 12V
(some cars need to connect a rectifier)

The original car does not reverse image should also be so connected like this.





Notes: (Factory password: 1314 or 1368)

1. Unplug the negative terminal of the battery. Turn off the power and install the screen.

2. If the original host has a fiber optic cable. You need to move the fiber optic plug to our power cable.



5. If the original car screen does not display correctly, please enter the factory settings and select the screen type that corresponds to the original car system (please ignore the car model).

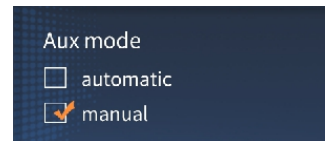
[1] NBT_F48/F49(6.5",HalfScreen)

[2] CCC_E60(6.5",FullScreen)

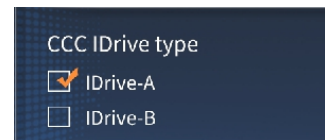
[3] CCC_E60(8.8",FullScreen)

[4] CIC_E60(2012)/E83(6.5",HalfScreen)

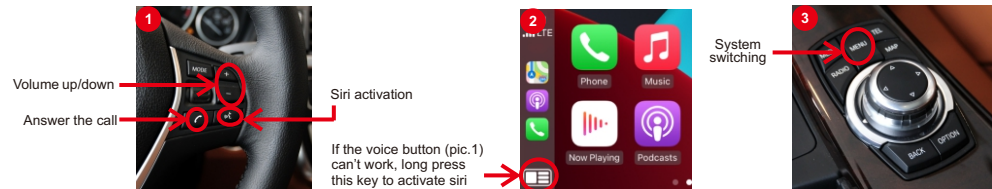
3. When installing a CCC system model, set AUX to manual mode by default in the factory settings.



4. When installing a CCC system model, if the knob does not work properly, you need to select Idrive A/B in the factory settings.



Operation



Packing list



1* carplay head unit



1* USB cable



1* power cable