

Porsche PCM 4.0 User Manual

Contents

NO1.Function statement

NO2.Instructions for connect CarPlay

NO3.Operating instructions for steering wheel buttons

NO4.CInstructions for CarPlay upgrade

NO5.Matters needing attention

NO1.Function statement

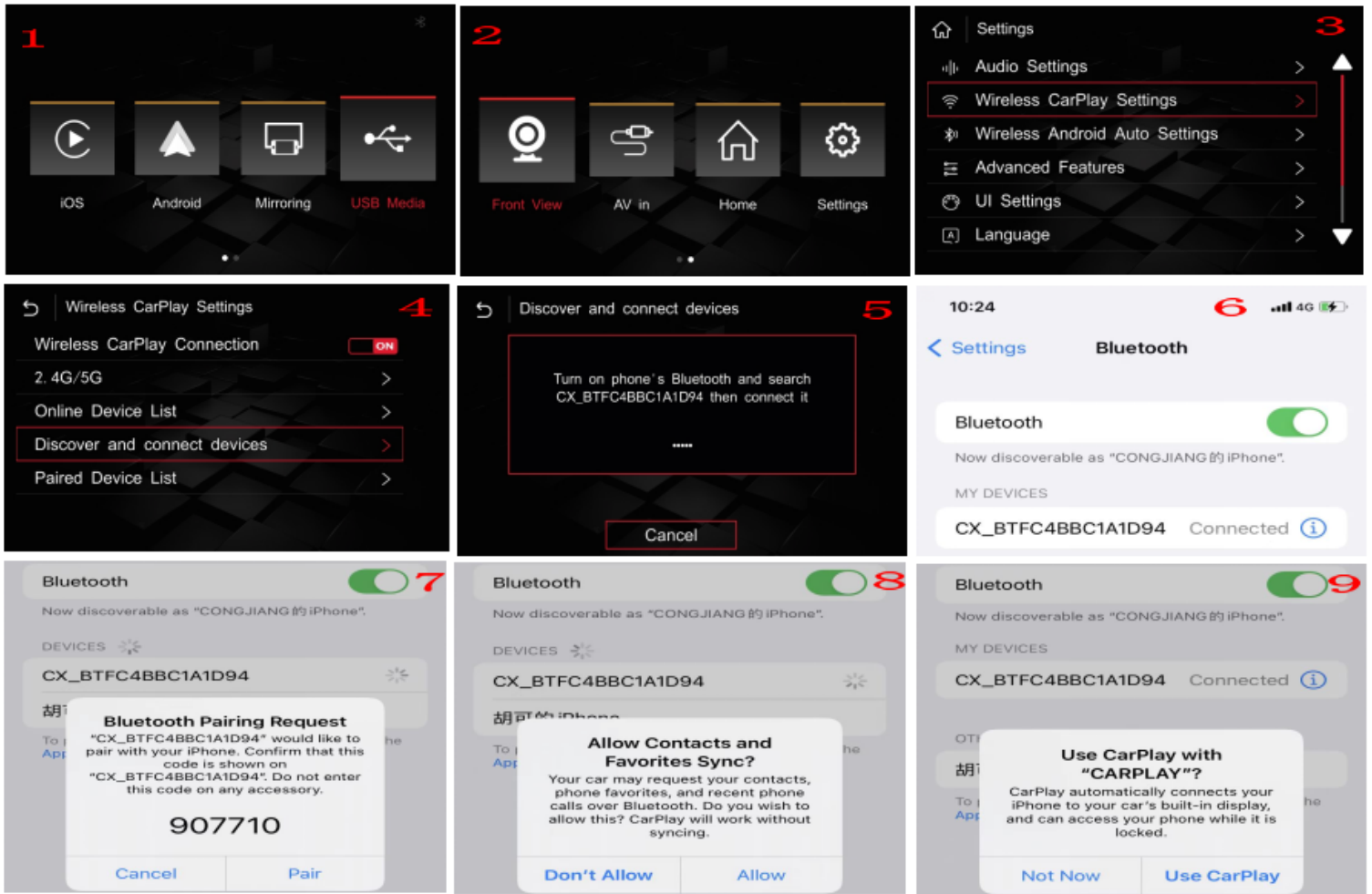
1. Support Apple wireless / wired CarPlay
2. Support wireless/wired Anroid Auto
3. Support Apple wired airplay
4. Support Android wired AutoLink
5. Support play video from USB equipment
6. Support lossless sound quality, perfect presentation and EQ adjustment
7. Support reversing radar and track display
8. Support front view input, exit reversing and automatically switch to front view, with optional lead time
9. Support adjusting microphone sound quality
10. Support user firmware upgrade

NO2.Instructions for connect CarPlay

Steps to connect Apple wireless to mobile phone:

1. Switch to the main interface of CarPlay
2. Find the settings of CarPlay main interface
3. Click settings and select wireless CarPlay settings
4. Select discover and connect devices
5. The decoder Bluetooth device name (beginning with CX) will be displayed on the screen
6. Click on the mobile terminal to search for Bluetooth devices and select point pairing in turn. It is allowed to use CarPlay

Proceed as follows:



NO3. Operating instructions for steering wheel buttons

Note: select the external sound source of the original vehicle to AUX or Auxiliary before switching CarPlay



Porsche PCM4.0



1.MEDIA(①),CAR(②),BACK(③):Press and hold any key for 3S to switch CarPlay

2.HOME(④):Return to the main interface of CarPlay in the CarPLAY interface

3.⑩:Short press to confirm, long press to activate voice Siri
Left and right rotation: left and right selection

4.SOURCE (⑧) :Press and hold 10s to restart the CarPlay decoder

5.PHONE (⑤) :When there is no phone, long press to activate voice. When there is a call:
short press to answer the call, long press to hang up the call.

6.MAP (⑦) ,TUNER (⑥) :Press any key to open the map app

7.OPTION (⑨) ,CAR (②) : Short press any of the keys to return to the original vehicle interface

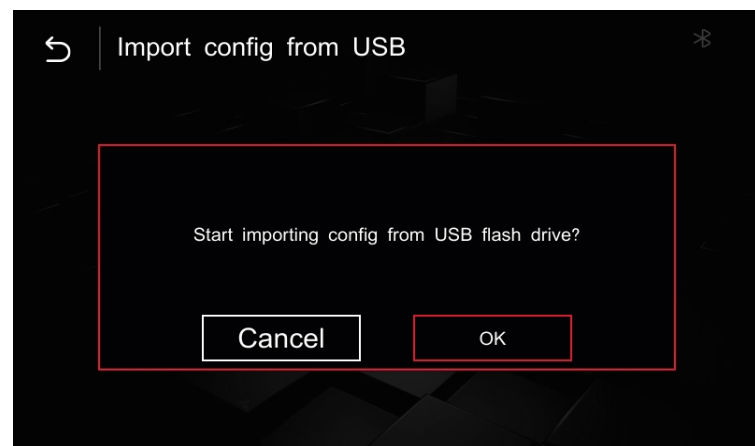
NO4.Instructions for CarPlay upgrade

The upgrade steps are as follows:

① In the USB device, copy the upgrade file from the computer, unzip the file, then put ISPBOOOT.BIN and OSU_Settings folder or update file placed in the root directory of the USB flash disk.

Insert USB and return to the main interface → settings → version information → about the

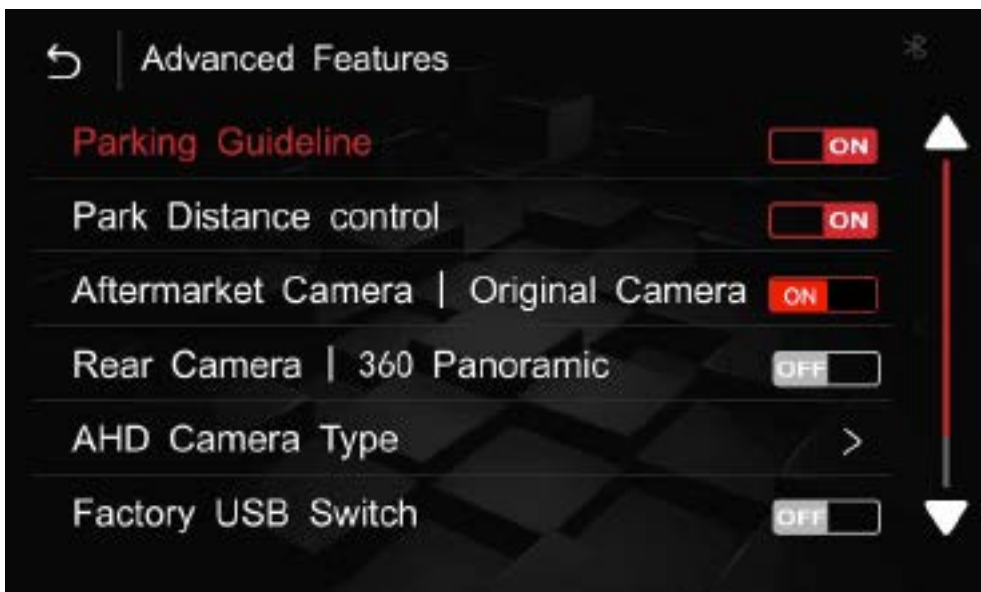
device → update → click the corresponding file to upgrade → upgrading (during the upgrading process, the USB device cannot be pulled out, and the USB device will be read automatically after the upgrading is completed)



The power cannot be cut off during the upgrade process. Pay attention to whether the file name in the USB flash disk is correct. Determine the version information before upgrading

NO5.Matters needing attention

1.If for extra camera, Set as Aftermarket for Reverse camera



2.When installing the decoder, the original vehicle must be powered off

3.After dialing, the decoder must be powered off and restarted

4.After the decoder wiring is completed, please be sure to test the telephone, sound and reversing before resetting the original vehicle