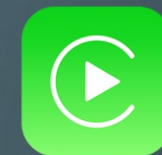


User Manual

EVO Carplay MMI BOX

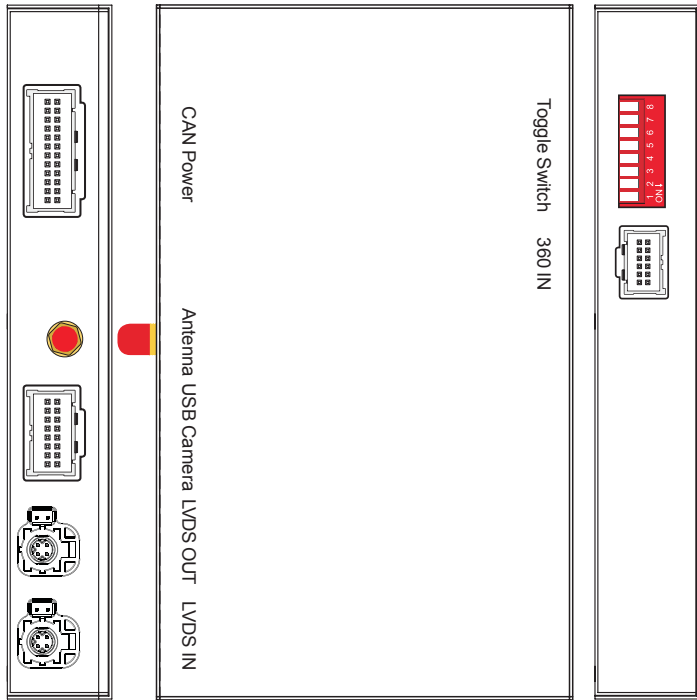


Apple CarPlay



Android AUTO

Specifications



Panel description

CAN Power	For power cable connection, CAN data transmission
Antenna	Wifi antenna connector
USB Camera	USB data transmission, and for reverse/front camera connection
LVDS OUT	Connect with cable labelled 'LVDS-GPBMW1901-NBT'
LVDS IN	Connect with OEM LVDS from the screen
Toggle switch	Refer DIP code setting to set for different screen size
360 IN	Exterior 360 input(VGA signal input)

Input	USB/CVBS signal input
Input Voltage	12-16V DC
Rated Current	2A
Rated Power	24W
Control	Voice control, iDrive control
Material	Housing aluminum

Features

- >Support wireless/wired Carplay connection
- >Support wireless/wired Android auto function (some mobile phones)
- >Support wireless Airplay function
- >Support wired Autolink function
- >Compatible with OEM microphone and external microphone
- >Support EQ adjustment,lossless sound quality
- >Support USB to play audio file &video, support firmware upgrade
- >Keep the OEM system function, reversing radar and track display

Accessories



LVDS cable



WIFI antenna



AV/USB cable



CAN power cable

(Note: This cable isn't for BMW i3/i8, longer

for i3/i8)



MIC adapter cable

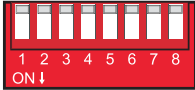



usb to AUX audio cable

Compatible car model

BMW-EVO Model configuration table-matching model system

distinction diagram

SERIES	CAR MODEL	MANUFACTURE YEAR	SYSTEM	CAR SCREENSIZE	Toggle Switch	
Main car models						
1series	F20,F21	16-20	EVO(ID5\ID6)	6.5/8.8	<p>OFF</p>  <p>ON</p> <p>ON</p>  <p>1 ↓ 0 ↑</p>	
2series	F22	16-20	EVO(ID5\ID6)	6.5/8.8		
3series	F30/F31/F34	17-20	EVO(ID5\ID6)	6.5/8.8/10.25		
4series	F32/F33/F36	16-20	EVO(ID5\ID6)	8.8		
5series	F10/F11/F07	17-20	EVO(ID5\ID6)	8.8/10.25		
6series	F12/F13	17-20	EVO(ID5\ID6)	10.25		
7series	F01/F02	16-20	EVO(ID5\ID6)	10.25		
X3	F25	18-20	EVO(ID5\ID6)	8.8/10.25		
X4	F26	16-19	EVO(ID5\ID6)	10.25		
X5	F15	17-20	EVO(ID5\ID6)	8.8/10.25		
X6	F16	17-20	EVO(ID5\ID6)	8.8/10.25		
MINI	F56	18-20	EVO(MINI)	8.8		
Other car models						
SERIES	MANUFACTURE YEAR	SYSTEM	CAR SCREENSIZE	Toggle Switch		
M3	16-20	EVO(ID5\ID6)	8.8	6.5 inch:		
M4	17-19	EVO(ID5\ID6)	10.25	11000000		
M5	18-19	EVO(ID5\ID6)	10.25			
X1	18-20	EVO(ID5\ID6)	6.5/8.8	8.8/10.25 inch:		
X2	18-20	EVO(ID5\ID6)	8.8	11100000		
new energy5	18-20	EVO(ID5\ID6)	8.8/10.25			
Z4	17	EVO(ID5\ID6)	8.8			
i3	18-20	EVO(ID5\ID6)	10.25			
i8	18-20	EVO(ID5\ID6)	10.25			

tip: If the installed car model screen is 10.25inch, please use dip switch code 11110000 first

ID 5



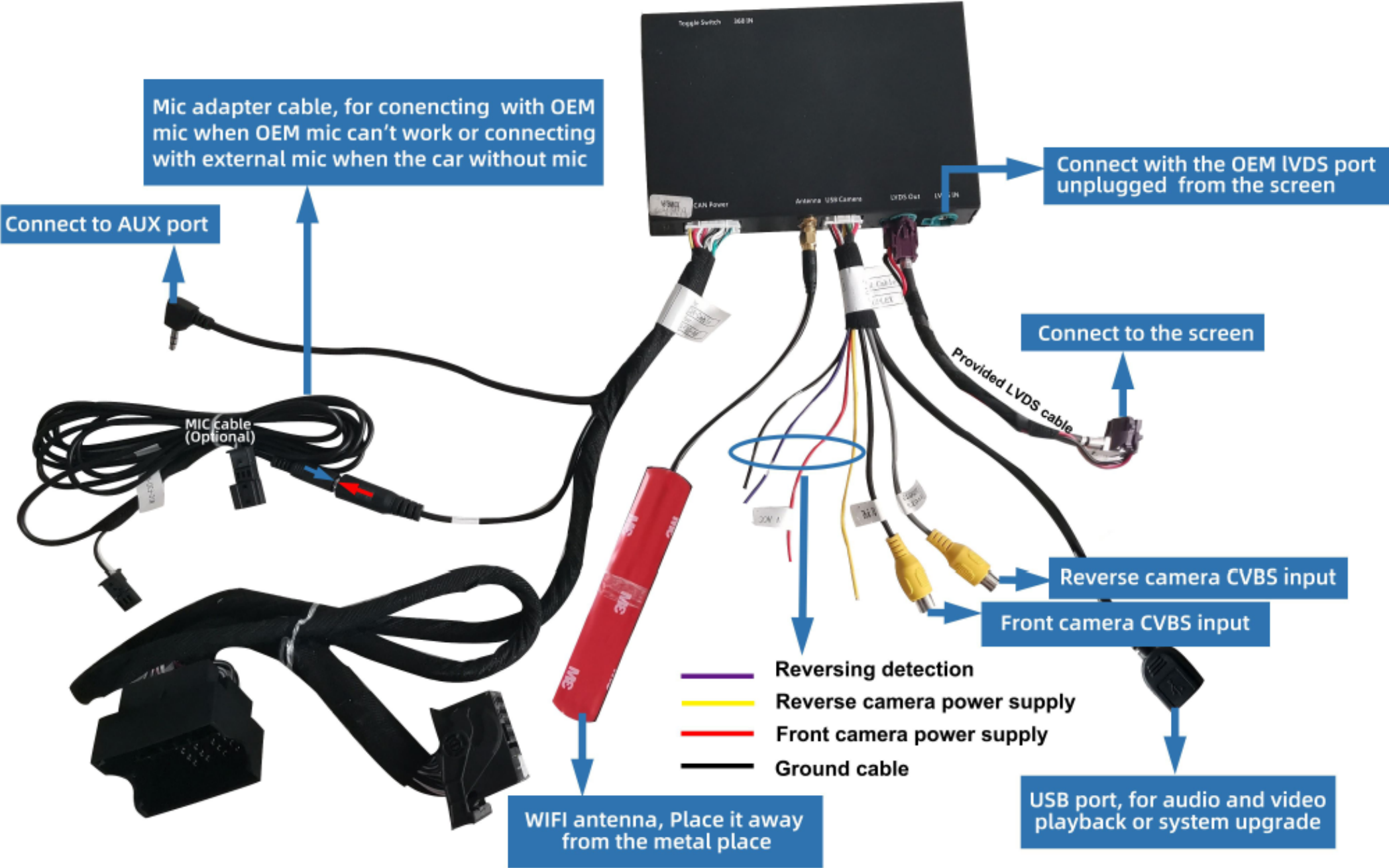
ID 6



EVO MINI



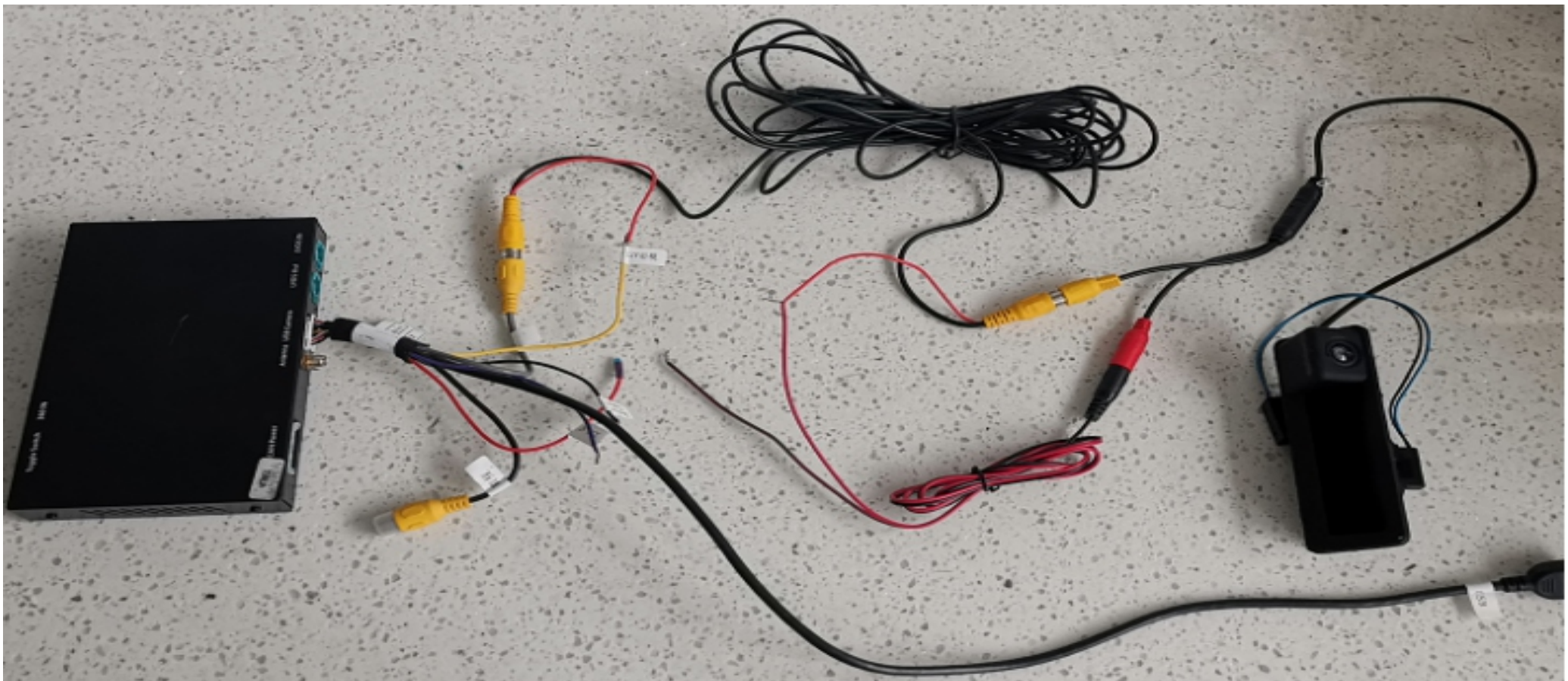
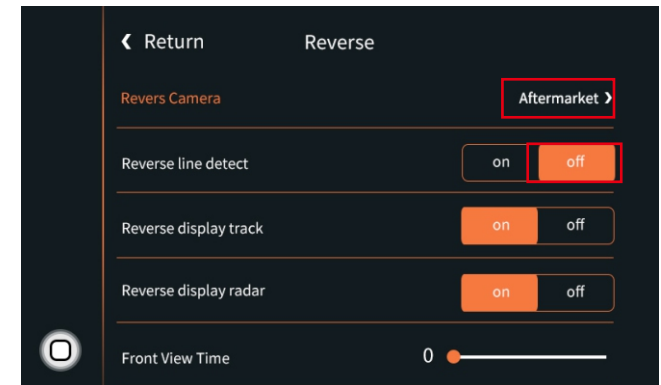
Connection Diagram



Reverse camera wiring connection and settings

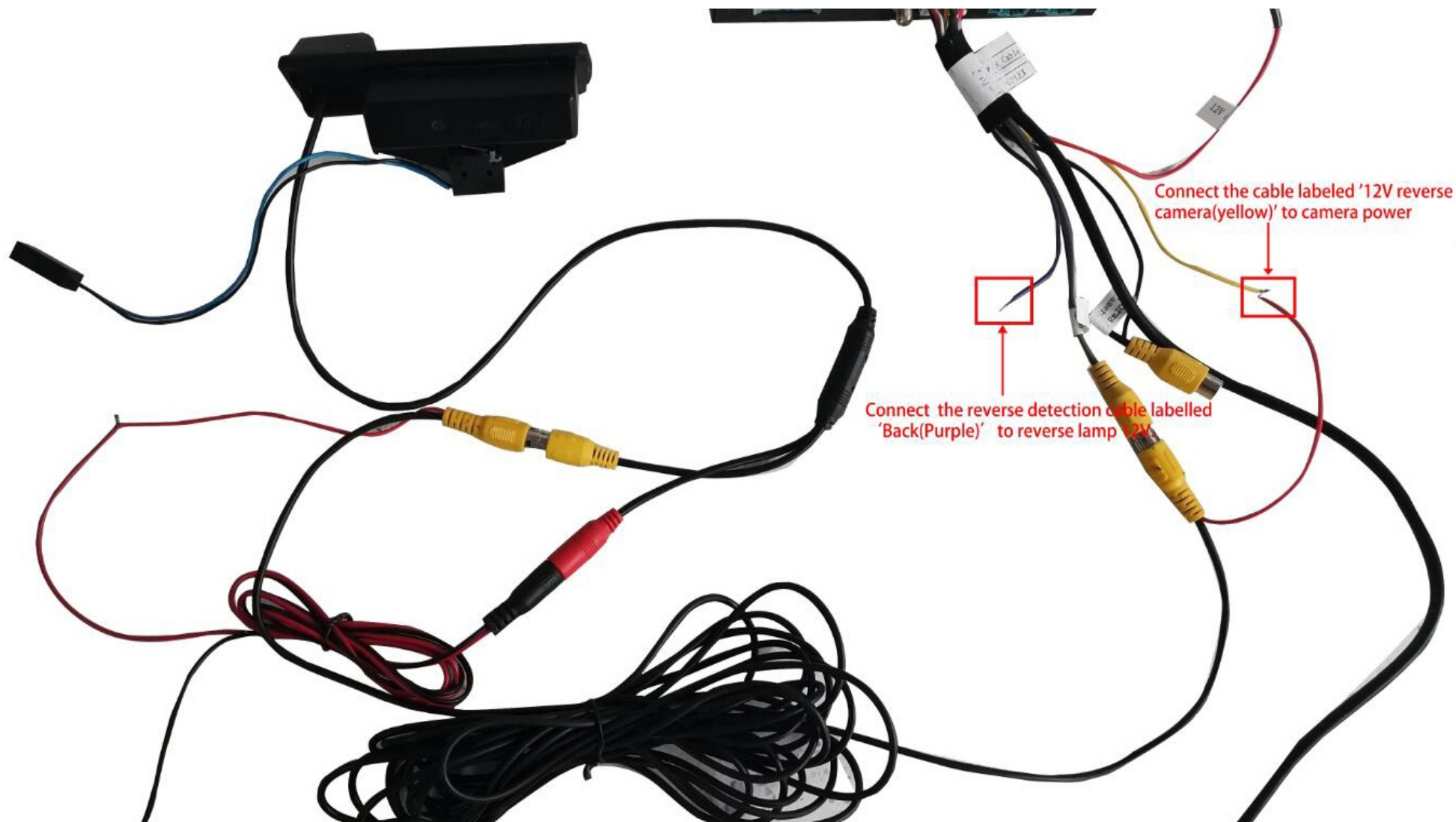
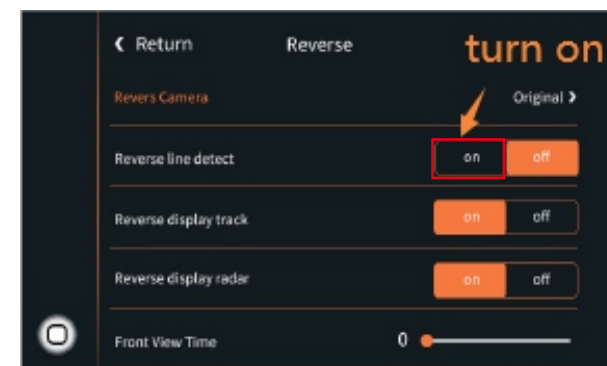
Automatic transmission

1. Connect the reverse camera to CVBS OUT labeled 'Reverse camera'
2. Connect the cable labeled '12V reverse camera(yellow)' to camera power
3. Setting → Reverse → Reverse camera → Aftermarket



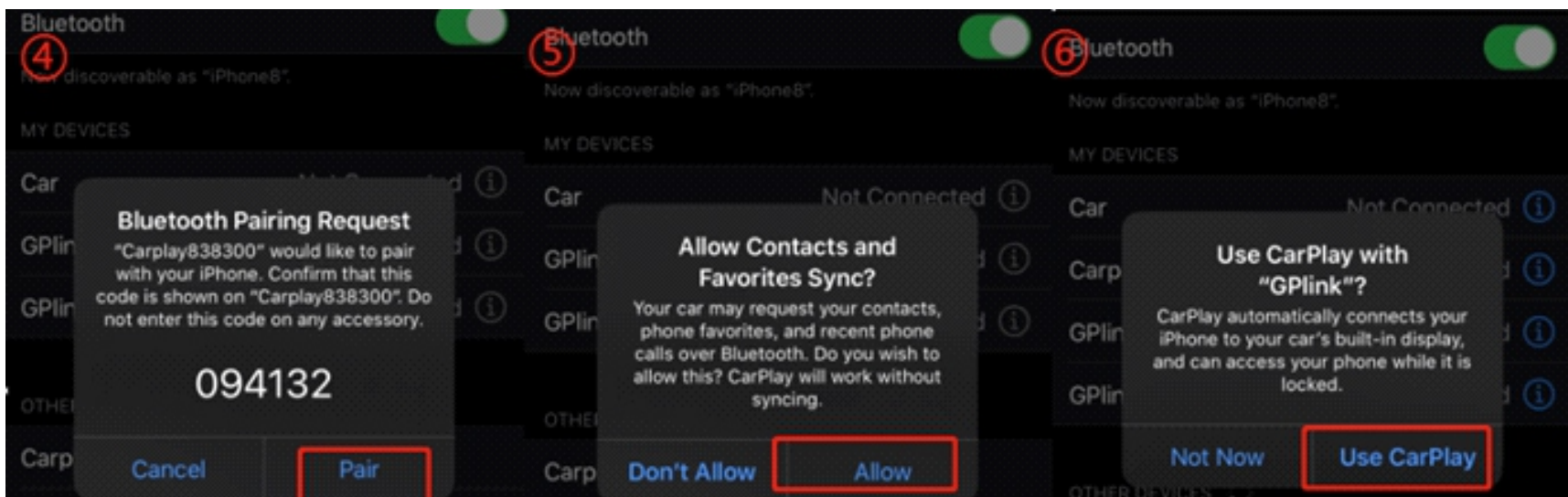
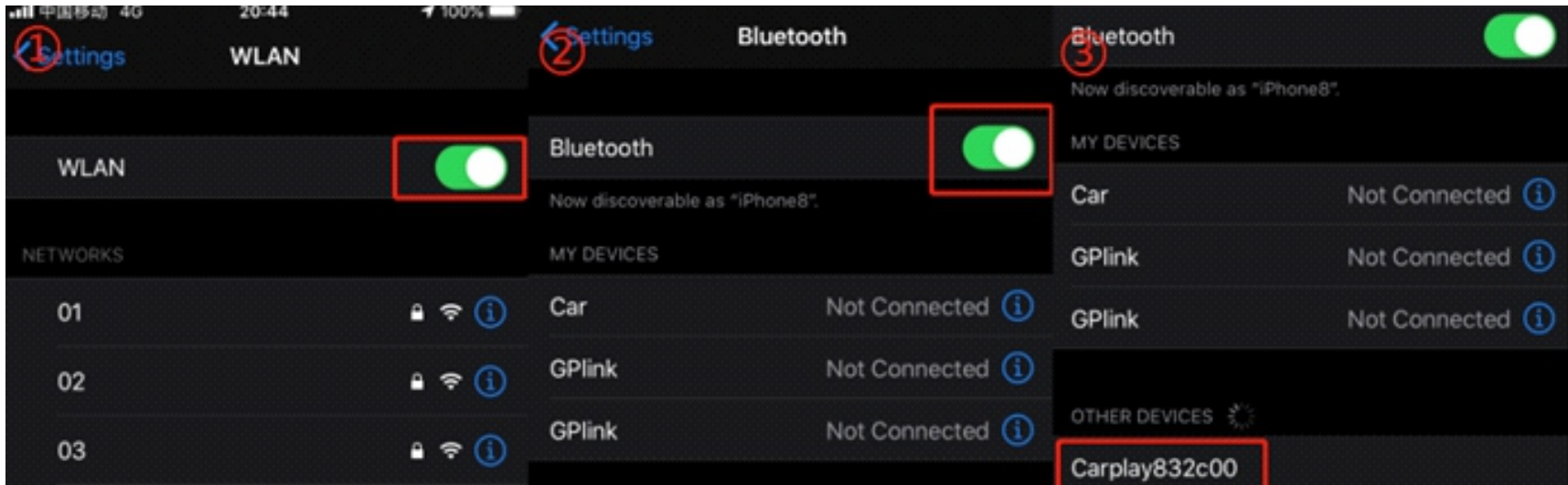
Munal transmission

1. Connect the reverse camera to CVBS OUT labeled 'Reverse camera'
2. Setting → Reverse → Reverse camera → Aftermarket



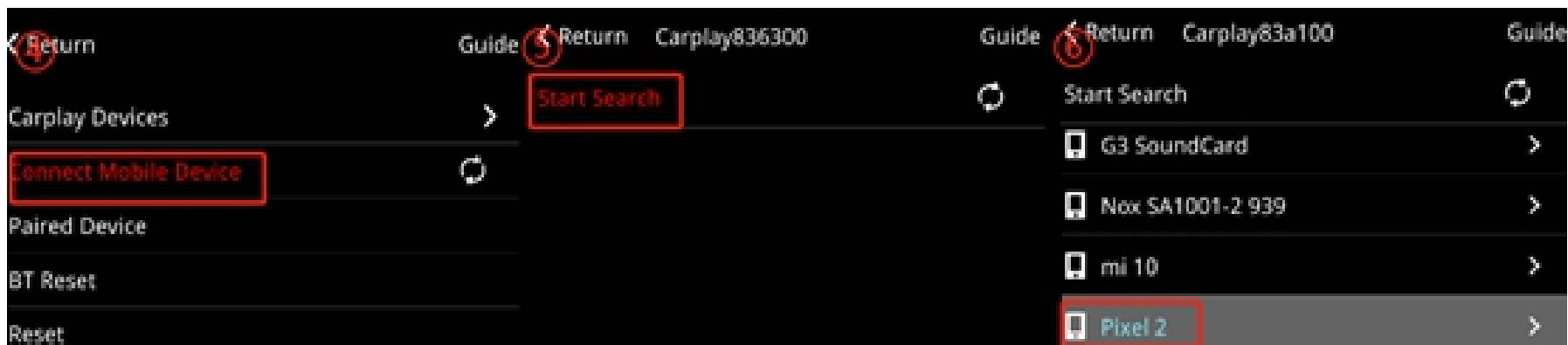
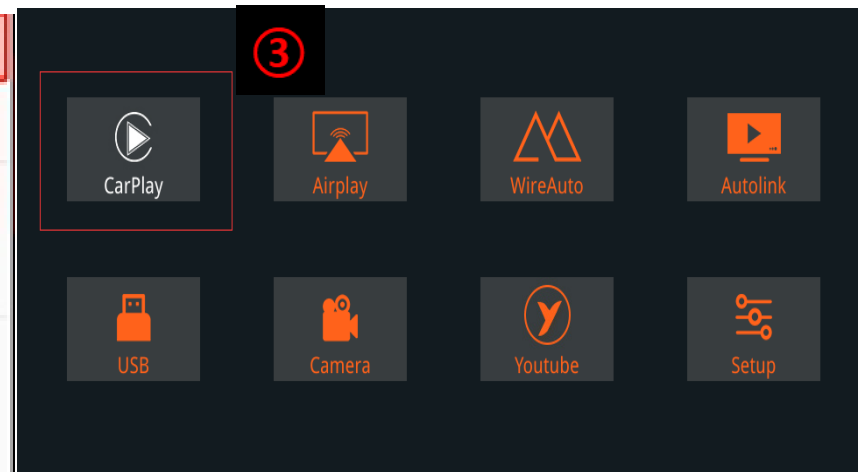
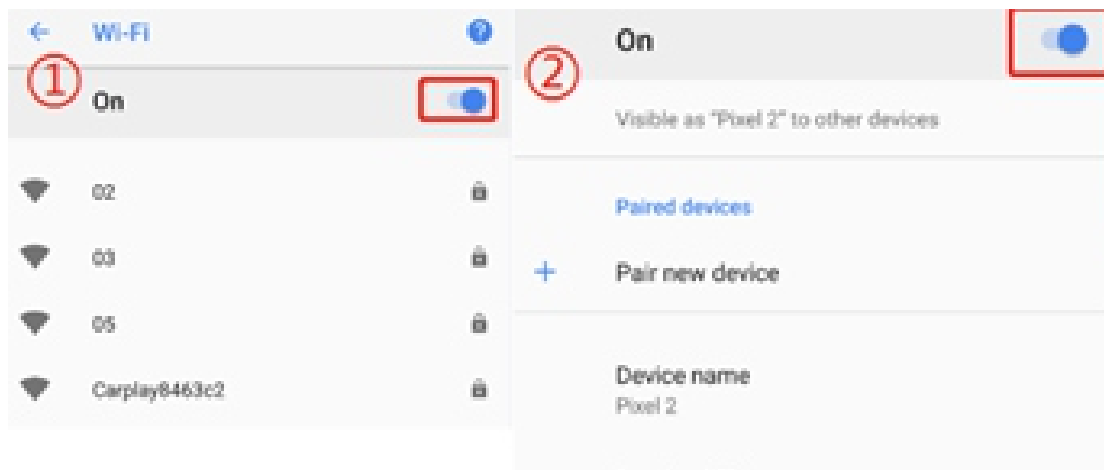
Wireless carplay connection

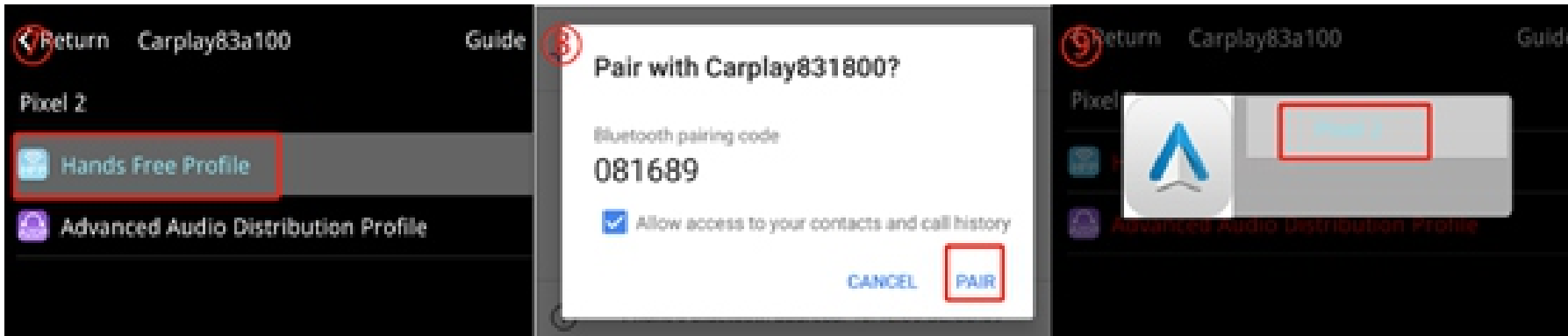
1. Turn on WIFI (Fig.1)
2. Turn on Bluetooth (Fig.2), and connect Carplay's bluetooth (Fig.3/4)
3. After the bluetooth connection is completed, the following prompts will pop up, click 'Allow-Use carplay' (Fig.5/6)



Wireless Android auto connection

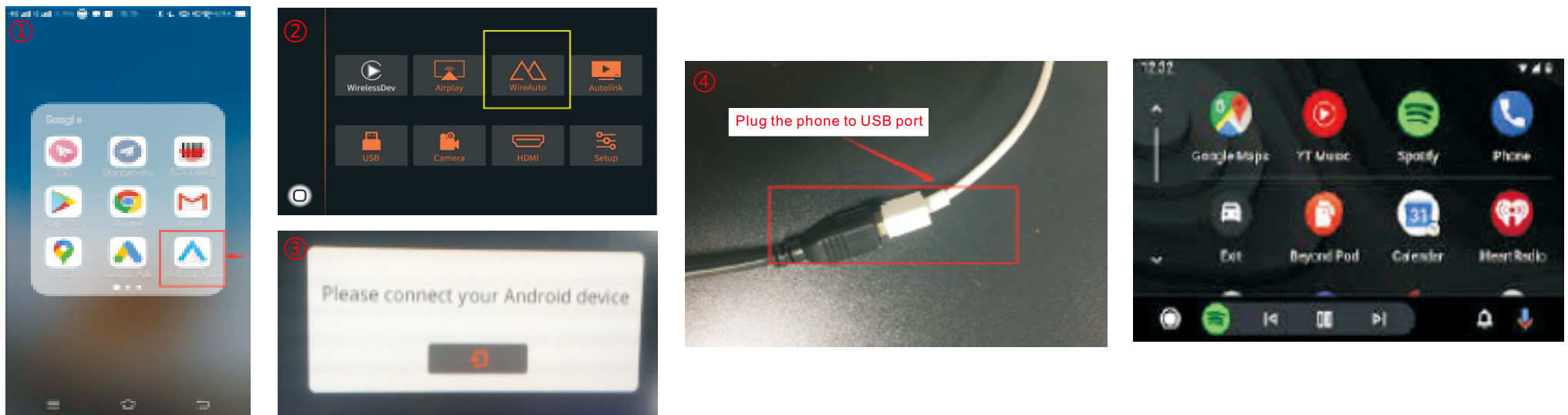
1. Turn on WIFI (Fig.1)
2. Turn on Bluetooth (Fig.2)
3. Enter the Wireless Dev APP(Fig.3)
4. Search the bluetooth of phone(Fig.4 / 5 /6)
5. Choose any one of the options on the car end to pair(Fig.7)
6. The pairing request pops up on the phone, select 'pair' (Fig.8/9)





Wired Android auto connection

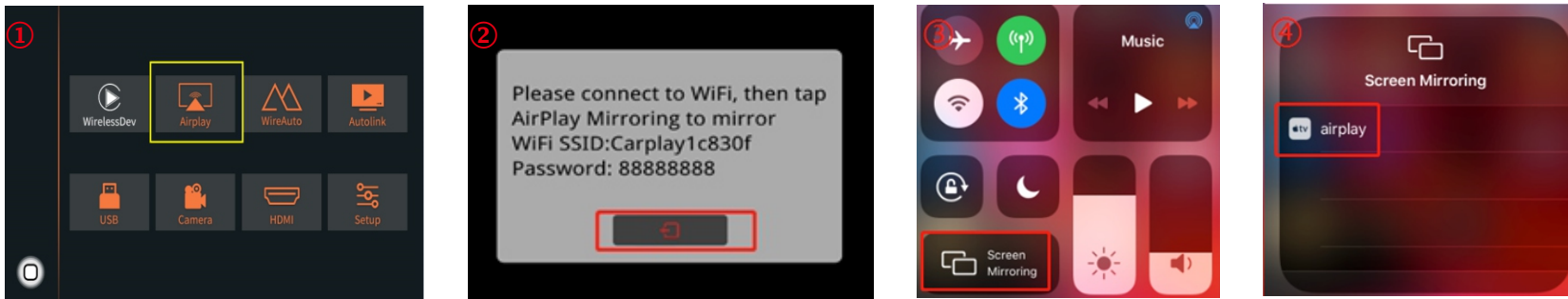
1. Download Android auto APP on Android phone(Fig.1).
2. Click 'WireAuto' icon(Fig.2), the prompt 'Please connect your Android device' will pop up(Fig.3).
3. Plug your phone to USB port. then it will enter Android auto automatically(Fig.4).



Wireless Airplay connection

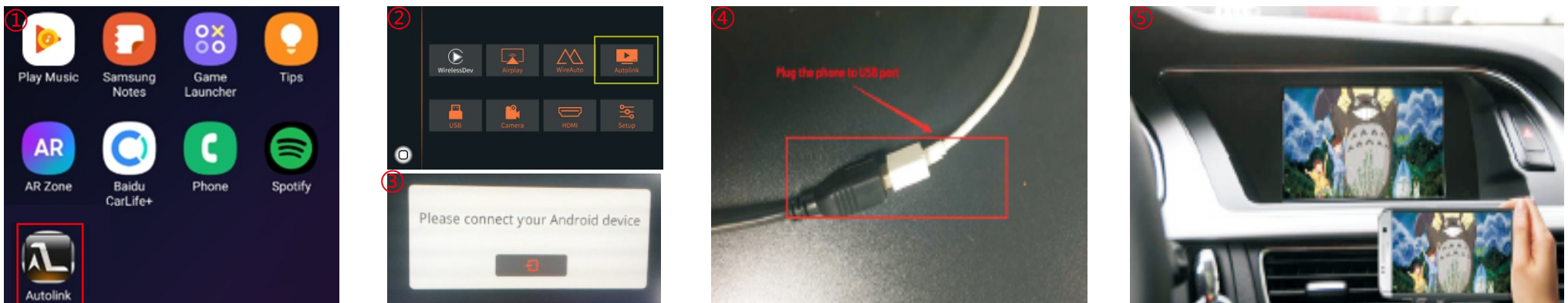
1. Click 'Airplay' icon first (Fig.1), the pairing information with the phone will be displayed (Fig.2)
2. Search wifi signal of Airplay and connect
3. Turn on Airplay (Fig3/4)

Note: If you have connected Carplay before, please disconnect Carplay wifi first.



Wired Autolink connection

1. Download Android auto APP on your Android phone and turn on all the prompt permissions of this APP (Fig.1).
2. Click 'Autolink' icon(Fig.2), the prompt 'Please connect your Android device' will pop up(Fig.3).
3. Plug your phone to USB port(Fig.4). it will enter Android auto automatically(Fig.5).













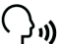


Original buttons



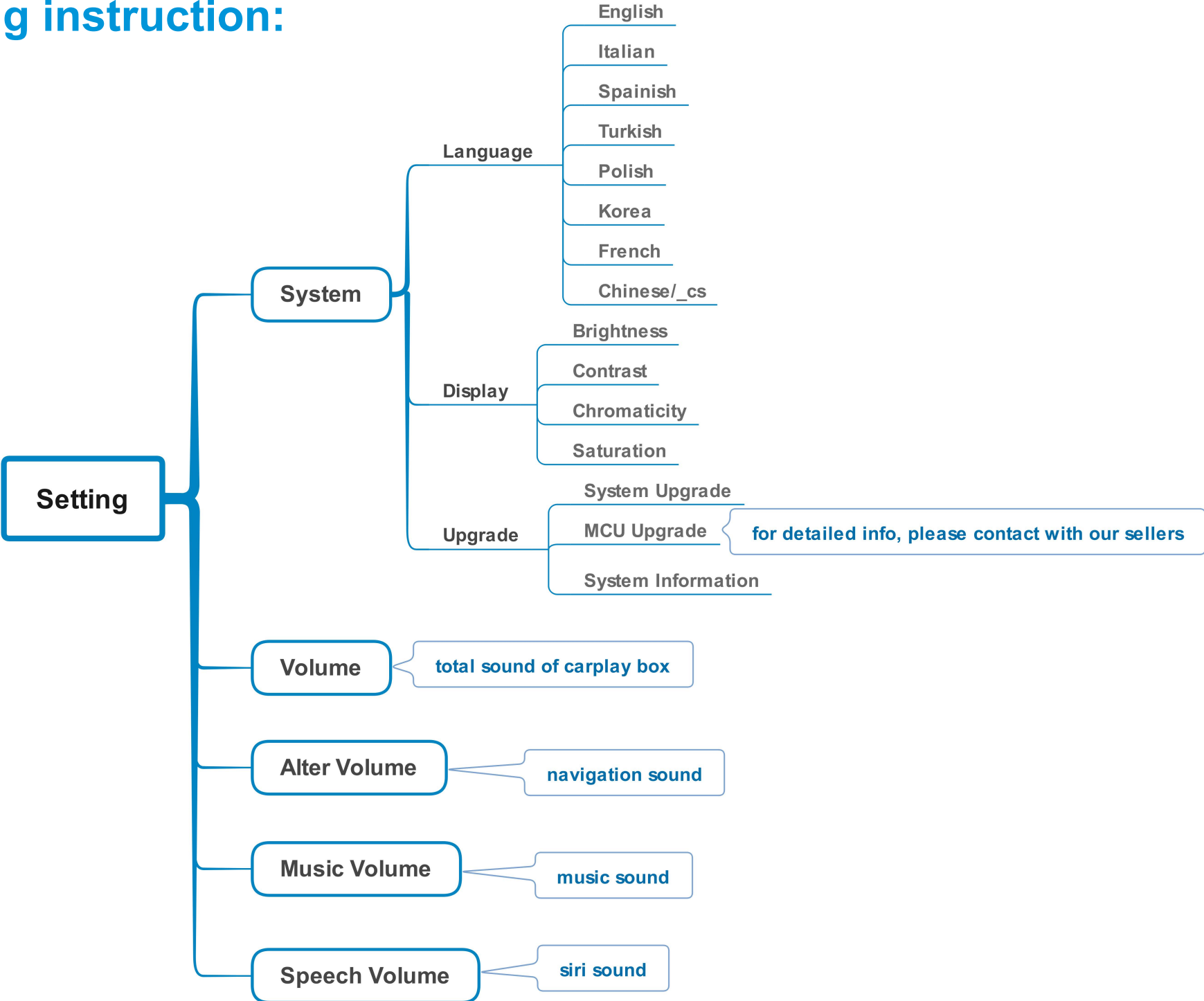
BMW i-Drive Button

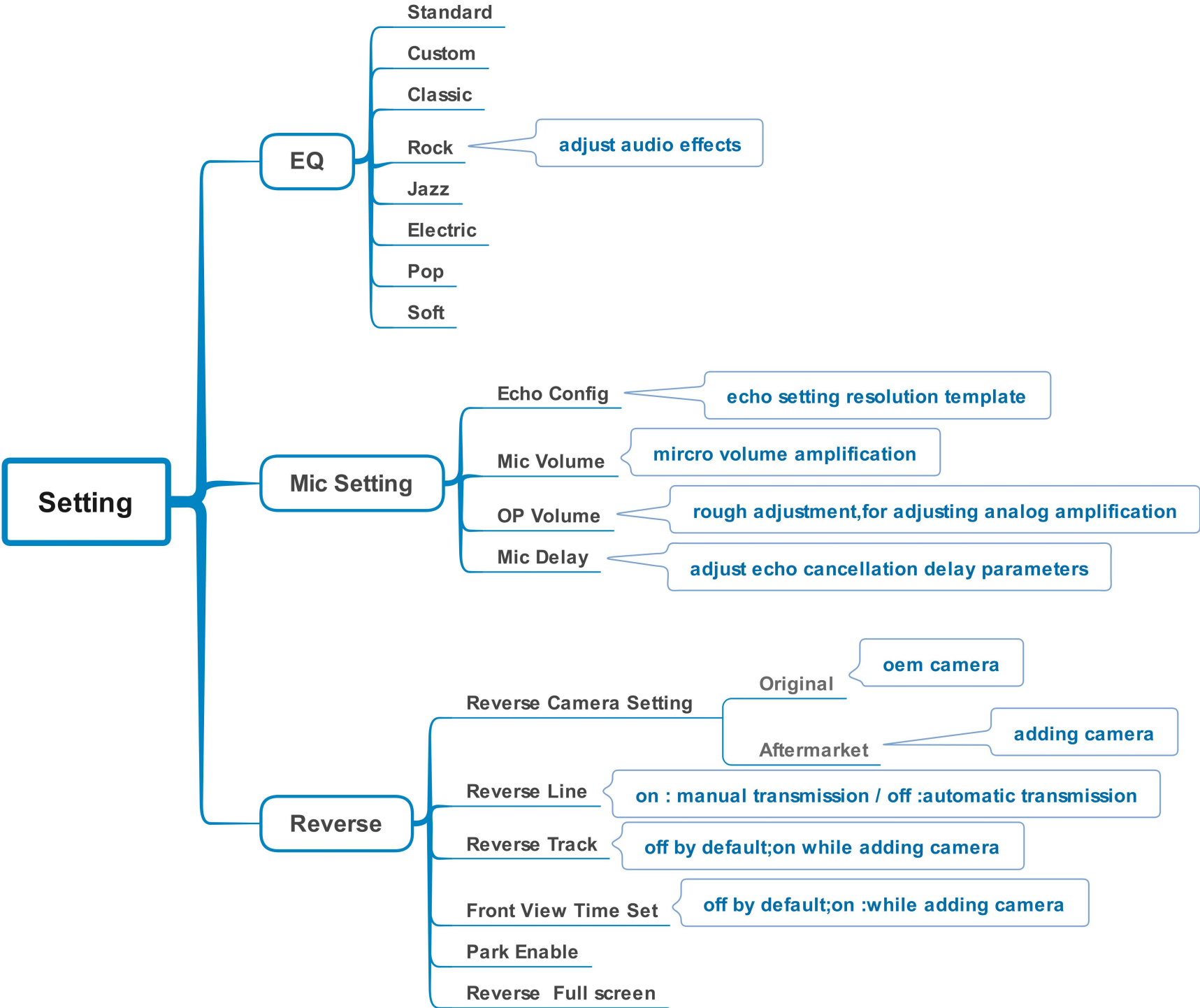


Steering Wheel Buttons

Button	Function	Operation	Remarks
1 MENU	System switching	Long press the button for 3 seconds	OEM \longleftrightarrow CarPlay
2 Back	Go back	Press the button short time	Apple Car Play Function 
	Restart	Press the button 5 seconds	Google Android Auto  You can use this function when you get in trouble
3 Dial	Move the pointer Left or Right	Turn the dial Move Left or Right	Apple Car Play Function 
			Google Android Auto 
Dial	Move the pointer Up or Down	Move the Dial Long time	Apple Car Play Function 
			Google Android Auto 
4	Ok key	Short puress to choose Press the button 5 seconds to activate siri	Apple Car Play Function 
			Google Android Auto 
5	Volume adjustment	Press to increase/decrease the volume	Apple Car Play Function 
			Google Android Auto 
6 	"Siri" "Google Assistant"	Press the button 3 seconds	Apple Car Play Function 
			Google Android Auto 

Setting instruction:





Setting

EQ

- Standard
- Custom
- Classic
- Rock
- Jazz
- Electric
- Pop
- Soft

adjust audio effects

Mic Setting

- Echo Config
- Mic Volume
- OP Volume
- Mic Delay

echo setting resolution template

micro volume amplification

rough adjustment, for adjusting analog amplification

adjust echo cancellation delay parameters

Reverse

Reverse Camera Setting

- Original
- Aftermarket

oem camera

adding camera

Reverse Line

on : manual transmission / off : automatic transmission

Reverse Track

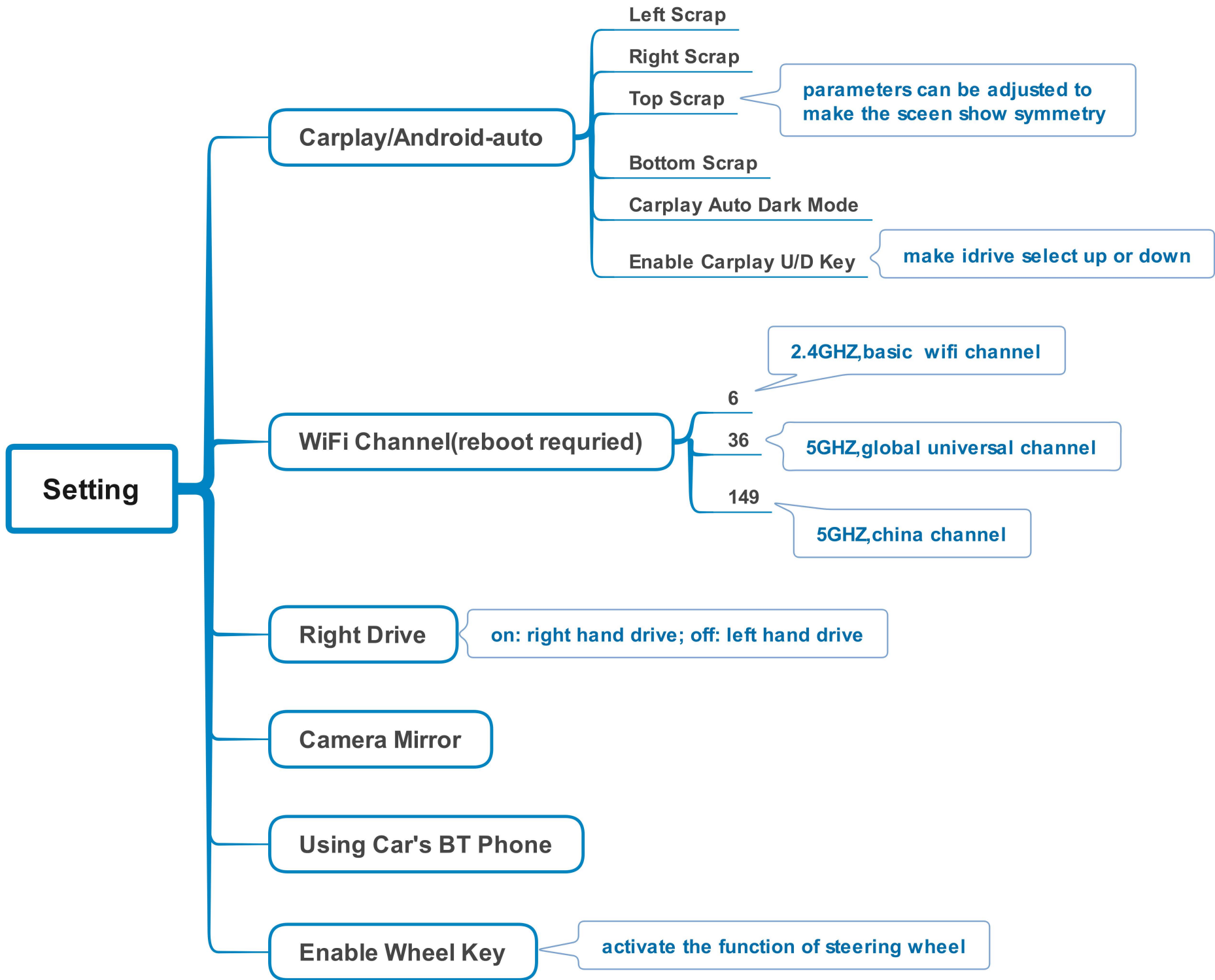
off by default; on while adding camera

Front View Time Set

off by default; on : while adding camera

Park Enable

Reverse Full screen



FAQ

1.Q: What need to be paid attention to during installation?

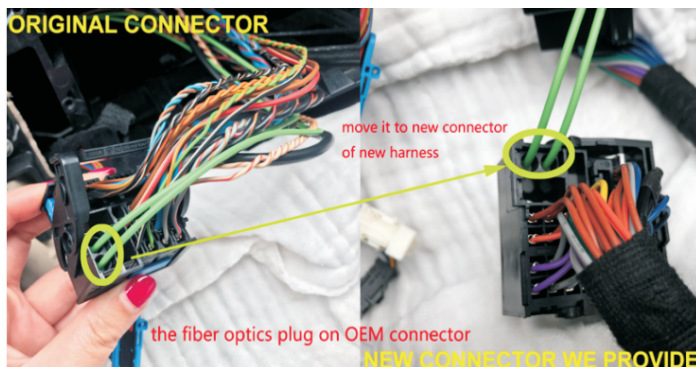
- A: 1) Make sure that the carplay box is compatible with the installed model, and check whether the label of box matches with the car model.
2) Power off during installation
3) After the installation is complete, it is best to lock the car for a few minutes to turn it on, wait until the running test is normal, then restore the car.

2.Q: While switching to carplay, the screen displays no signal,black screen, abnormal screen or no response?

- A: 1) Check whether the wiring is connected according to the wiring diagram
2) If the wiring connection is normal but the display is not normal, check if the pins of the lvds cable ports are bent or not in contact, you need to re-plug it.
3) Check whether the dip switch code is correct, after each change, re-plug the box's can power cable .
4) If the dip switch code and wiring connection are normal after inspection, box still switches to the black screen, contact with the saler for a solution

3.Q: I don't have sound when I connect carplay, what can I do?

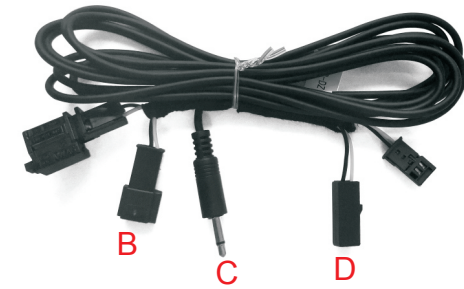
- A: 1) Connect fiber cable
2) Set AUX on OEM system, ensure that the Bluetooth signal connection between the mobile phone and the original car is disconnected.
3) If there is no sound after step1/2, connect AUX cable to AUX port of armrest box



4.Q:My car has OEM microphone, but it can't work, what can I do?

A: Please use the following cable to connect to OEM microphone.

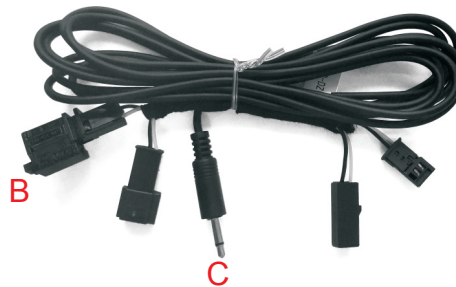
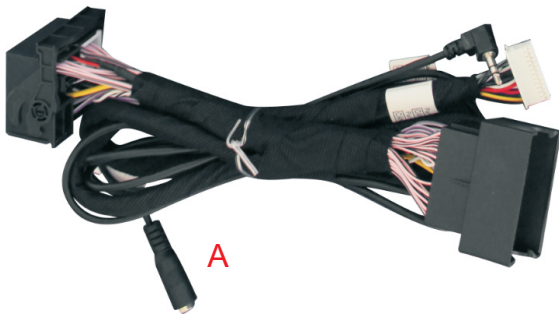
- 1) Connect A to C
- 2) Unplug blue connectors and place mic tap cable in between the connector with microphone on it and the main wiring harness coming from the roof.(B/D need to be connected)



5.Q:I don't have OEM microphone, how to connect external microphone?

A: You can do as following solutions.

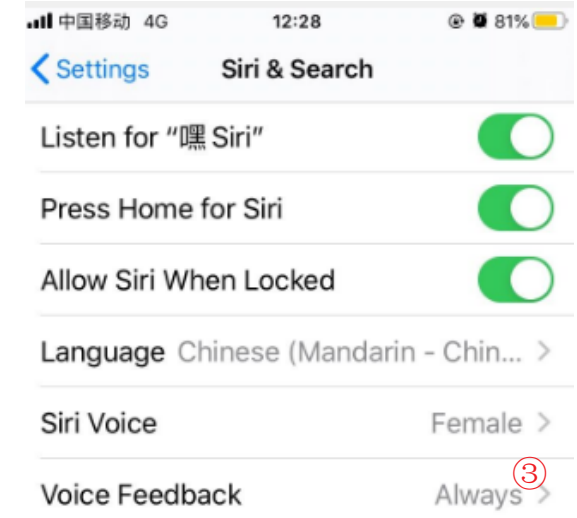
- 1)Connect A with C, B with D.
- 2) Set pin7 to ON, and restart



6. Q: Solutions to not being able to connect with carplay?

A: can try to use the solutions below separately or together

- 1) Click on carplay bluetooth or wifi on the mobile phone
- 2) At the same time, clear the Bluetooth devices on the mobile phone and the car, and then pair and connect
- 3) Go to WirelessDev to reset the Bluetooth, and then pair and (Fig.1)

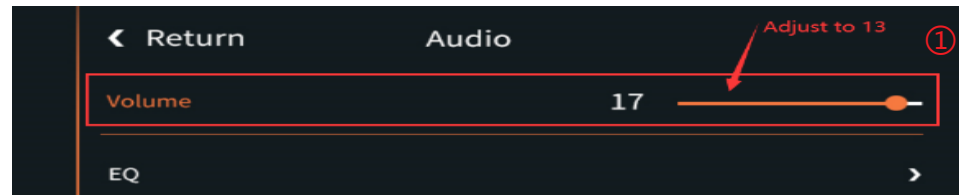


- 4) Restore the mobile network to the mobile phone
- 5) Check whether the carplay on the mobile phone is turned on (Fig.2)
- 6) Siri permissions are all turned on(Fig.3)
- 7) If necessary, check the antenna (whether it is broken, or attached to the metal, stay away from the box)

7.Q:When I call someone, he can hear himself, how to do?

A:1) Adjust the volume of the original car to normal use

2) Turn the volume in 'audio' setting to 13(Fig.1)



3) Turn the 'Microphone Volume' to 12

4) 'Microphone OP' tune from 0 until no echo is heard

5) Adjust 'AEC quality' to 2

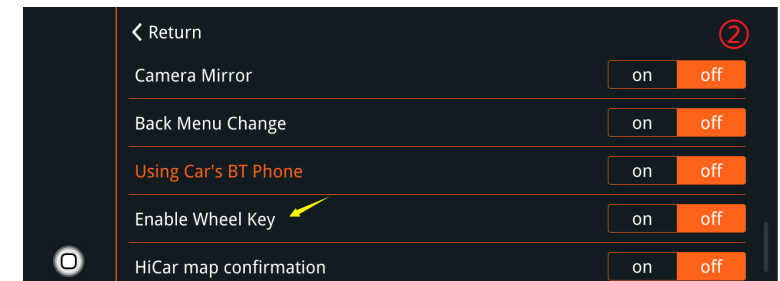
6) If the caller hears the echo interval for a long time, fine-tune the 'Microphone delay

7) If the caller hears a small voice, you can fine-tune the 'Microphone Volume' and 'Microphone PGA'

8.Q:I install the carplay, but the button on steering wheel can't work?

A:1)Set the setting 'Enable wheel key' to ON(Fig.1)

2) Short press the voice button or long press 5s the ok button on idrive knob to activate siri



9.Q:Siri function can not be used

A: 1) Check whether has turned the siri access permissions on iphone,turn all the options on

2) Turn the function of steering wheel on in carplay switch page setup

3) If can activate the Siri but Siri cant receive the command, please check whether the mic works first, if no problem with mic, check the Bluetooth of iphone, disconnect it from original car Bluetooth