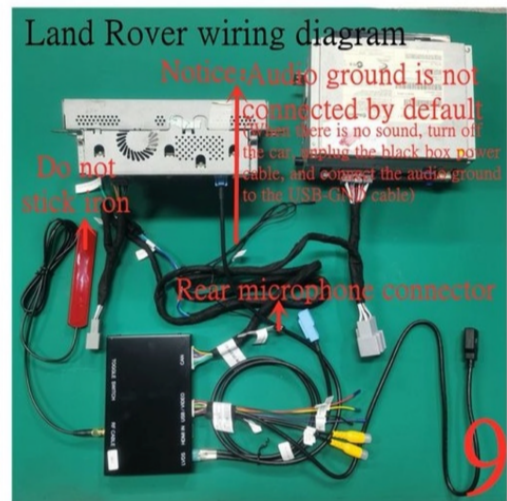
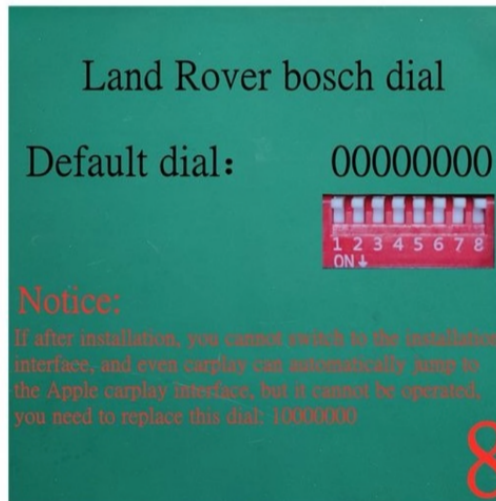
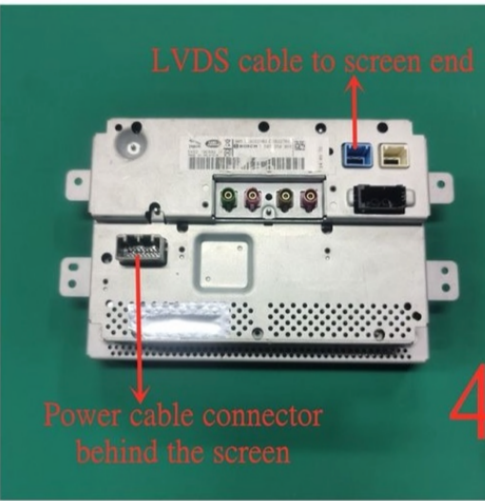
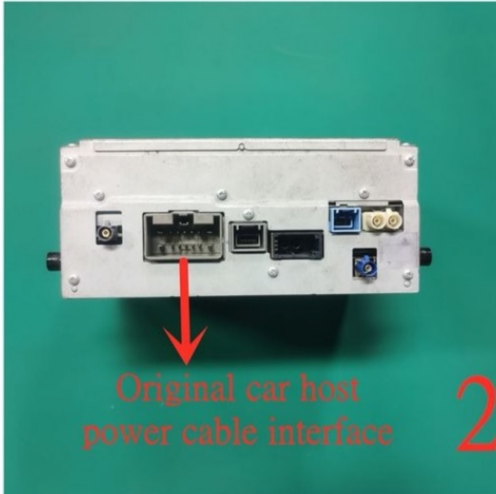


Land Rover Bosch complete product



Car Model	Year	DIP	Cable Code
Range Rover Evoque	2012-2016	01000000 (Default dial) 01001000 (The original car navigation interface displays residual images on the installation interface.) 11000000 11001000 (The original car navigation interface displays residual images on the installation interface.)	CAN-CPLR1901-BS-V3 (Power cable) LVDS-GPLR-1901-V2 (lvds) AV-USB-CPBMW-CIC-V2 (usb) 5GRF-FPC-1_5-HQ (golden antenna)
land rover discovery			
Range Rover Sport			
Range Rover			
Range Rover Evoque			
Discovery Sport			
Jaguar F-TYPE			
JaguarXF			
Jaguar XJ			

Special Note:
 1. Only when the original car interface's images/icons are displayed on the installation interface, and the dial 5 set to ON. Normally, the dial 5 cannot be set to ON
 2. dial default 2 set to ON and effective, Only when the mcu version is 23.3.18 or later (if not the mcu , the dip 2 is not effective , and Must update mcu, then to make dip set)

VERY IMPORTANT - WHEN INSTALLING, PLEASE ENSURE THE LDVS CABLES ARE CONNECTED FIRST BEFORE CONNECTING THE POWER CABLE. FAILURE TO DO SO MAY RESULT IN ISSUES