

# User Manual

**CIC Carplay MMI BOX**

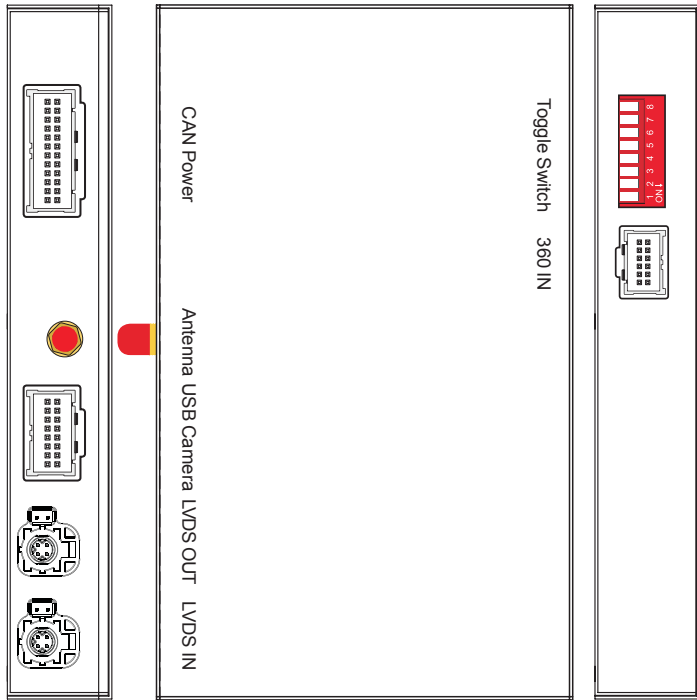


Apple CarPlay



Android AUTO

# Specifications



## Panel description

<b>CAN Power</b>	For power cable connection, CAN data transmission
<b>Antenna</b>	Wifi antenna connector
<b>USB Camera</b>	USB data transmission, and for reverse/front camera connection
<b>LVDS OUT</b>	Connect with cable labelled 'LVDS-OUT-CIC'
<b>LVDS IN</b>	Connect with cable labelled 'LVDS-CIC-C19'
<b>Toggle switch</b>	Refer DIP code setting to set for different car models
<b>360 IN</b>	Exterior 360 input(VGA signal input)

<b>Input</b>	USB/CVBS signal input
<b>Input Voltage</b>	12-16V DC
<b>Rated Current</b>	2A
<b>Rated Power</b>	24W
<b>Control</b>	Voice control, iDrive control
<b>Material</b>	Housing aluminum

## Features

- >Support wireless/wired Carplay connection
- >Support wireless/wired Android auto function (some mobile phones)
- >Support wireless Airplay function
- >Support wired Autolink function
- >Compatible with OEM microphone and external microphone
- >Support EQ adjustment,lossless sound quality
- >Support USB to play audio file &video, support firmware upgrade
- >Keep the OEM system function, reversing radar and track display

# Accessories



**LVDS OUT cable**

**LVDS-OUT-CIC**



**LVDS IN cable**

**LVDS-CIC-C19**



**WIFI antenna**



**AV/USB cable**

**AV-USB-GP68**



**CAN Cable**

**CAN-CIC-C19-V2**



**iDrive Cable**

**CIC-KT-V2**



**Microphone**

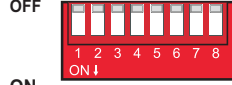



**MIC adapter cable**  
**MIC-22C-DZ**

# Compatible car model

## BMW-CIC Model configuration table-matching model system

### distinction diagram

SERIES	CAR MODEL	MANUFACTURE YEAR	CAR SCREENSIZE	Toggle Switch	
Main car models					
3series	E90/E91/E92/E93	09-12	6.5/8.8/10.25	 	
5series	E60/E61	08-09	8.8/10.25		
5GT	F10/F11/F07	09-12	8.8/10.25		
6series	F12/F13	09-12	10.25		
7series	F01/F02	09-12	10.25		
X1	E84	09-14	6.5/8.8/10.25		
X3	F25	11-13	8.8/10.25		
X5	E70	09-13	8.8/10.25		
X6	E71/E72	09-13	8.8/10.25		
Z4	E89	09-13	6.5/8.8/10.25		
MINI	R55/R56/R60	08-12	8.8		
Other car models					
SERIES	MANUFACTURE YEAR	CAR SCREENSIZE	6.5 inch: 00010000		
1series	08-12	6.5/8.8	8.8/10.25 inch: 00110000		
2series	08-12	6.5/8.8			
4series	08-12	8.8			
M3	08-12	8.8			
M4	08-12	10.25			
M5	08-12	10.25			
X2	08-12	8.8			
X4	08-12	8.8			

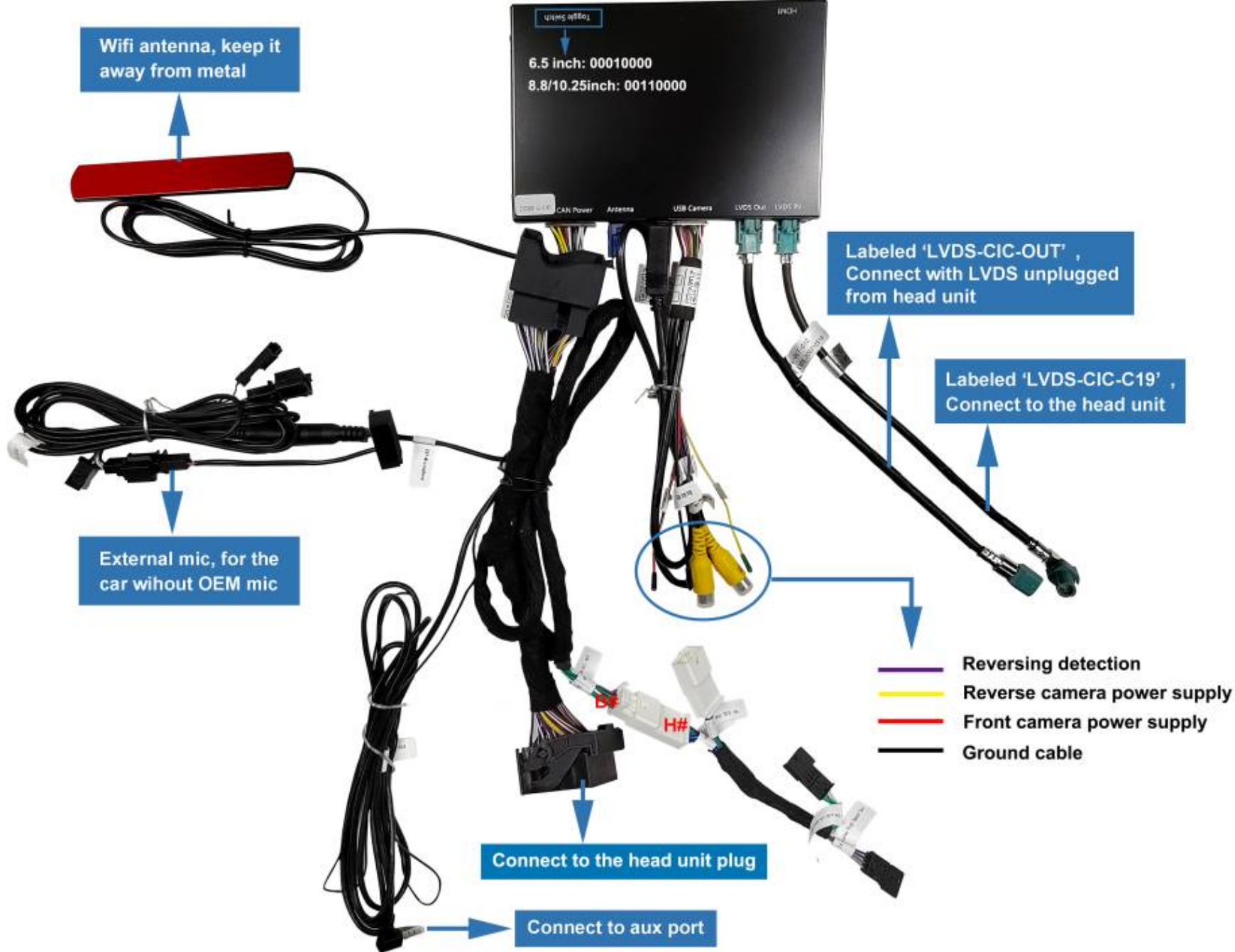
## CIC Host system (2008-2013)

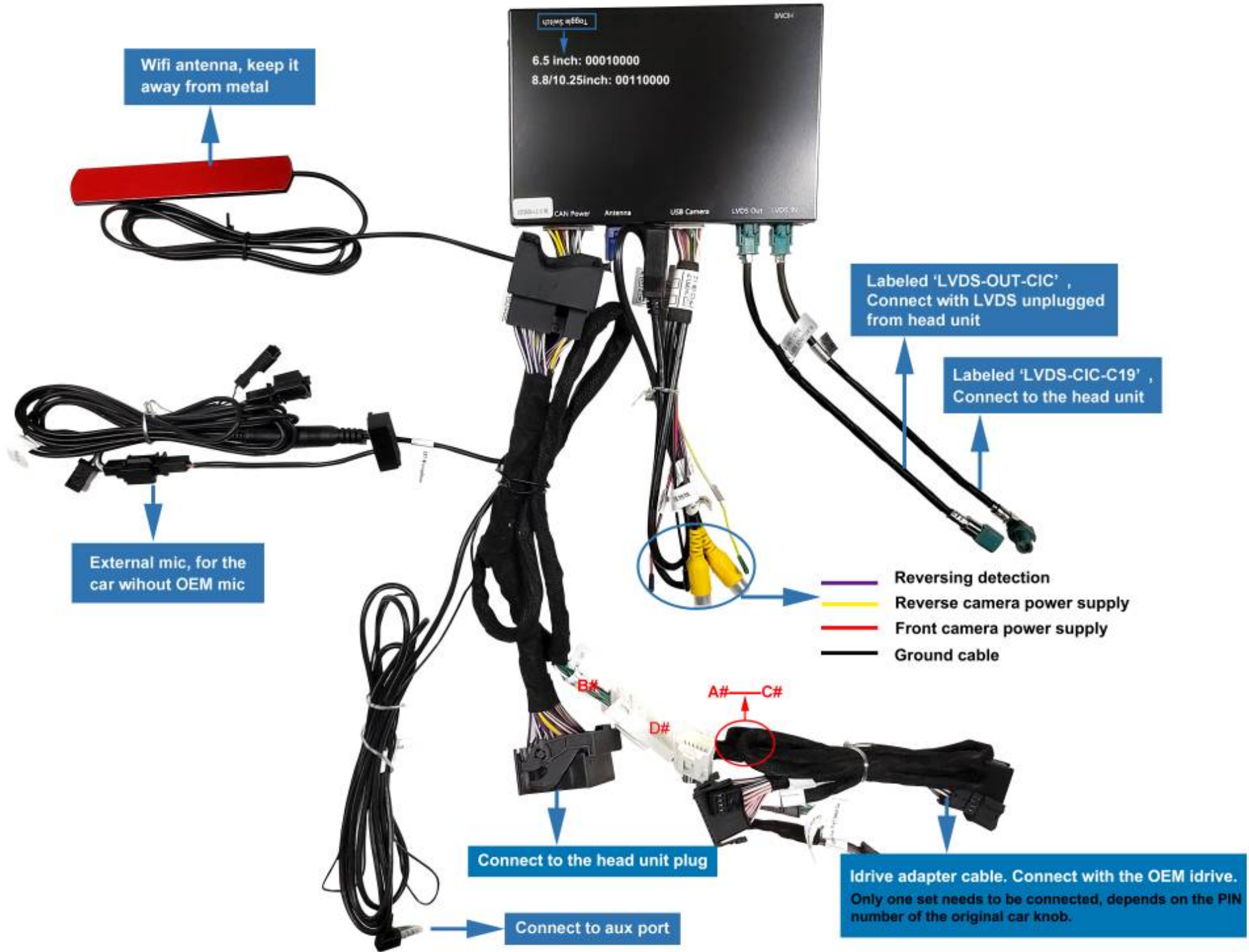


## BMW MINI CIC (2008-2012)



# Connection Diagram





Wifi antenna, keep it away from metal

Toggle Switch  
 6.5 inch: 00010000  
 8.8/10.25inch: 00110000

Labeled 'LVDS-OUT-CIC', Connect with LVDS unplugged from head unit

Labeled 'LVDS-CIC-C19', Connect to the head unit

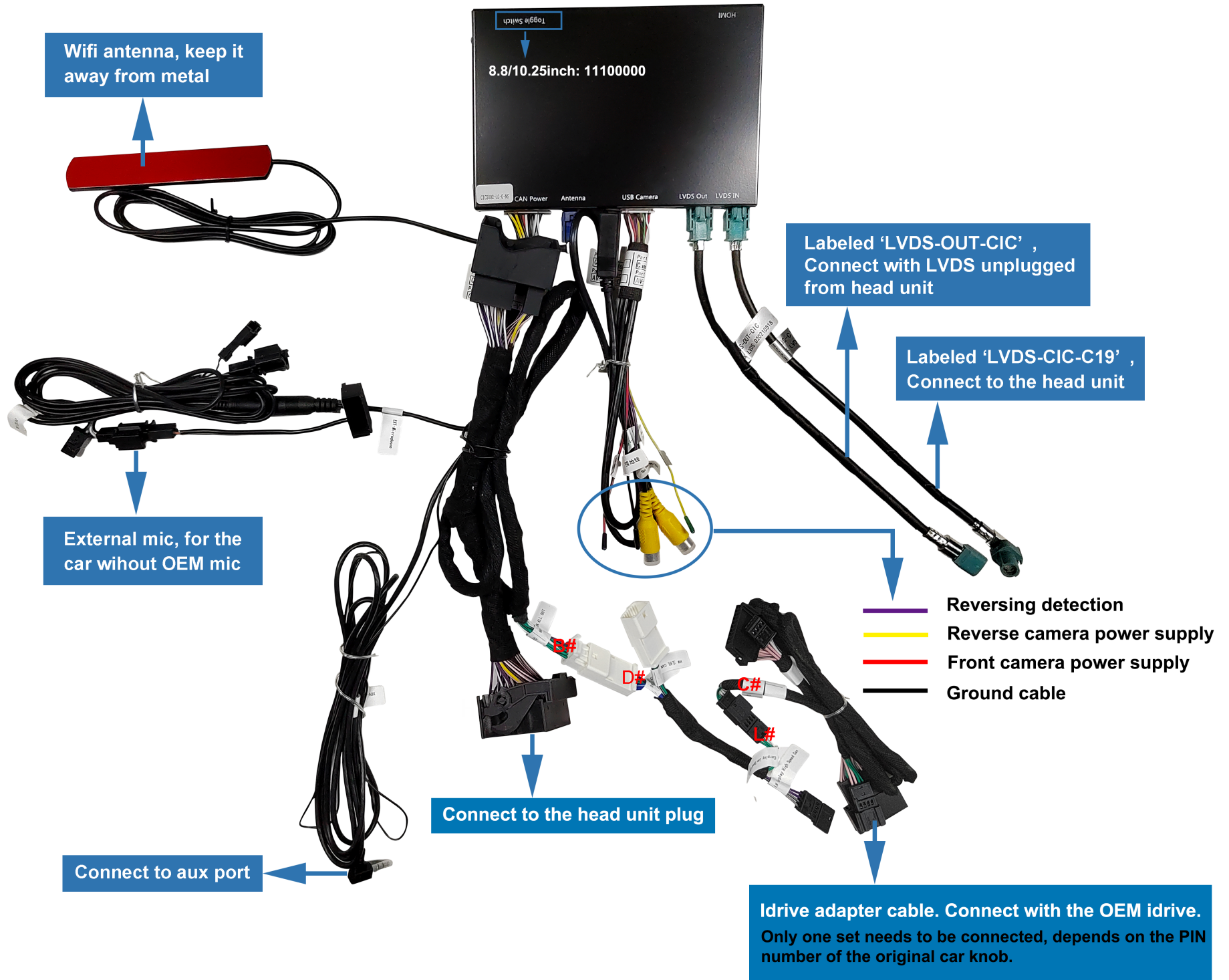
External mic, for the car without OEM mic

- Reversing detection
- Reverse camera power supply
- Front camera power supply
- Ground cable

Connect to the head unit plug

Idrive adapter cable. Connect with the OEM idrive. Only one set needs to be connected, depends on the PIN number of the original car knob.

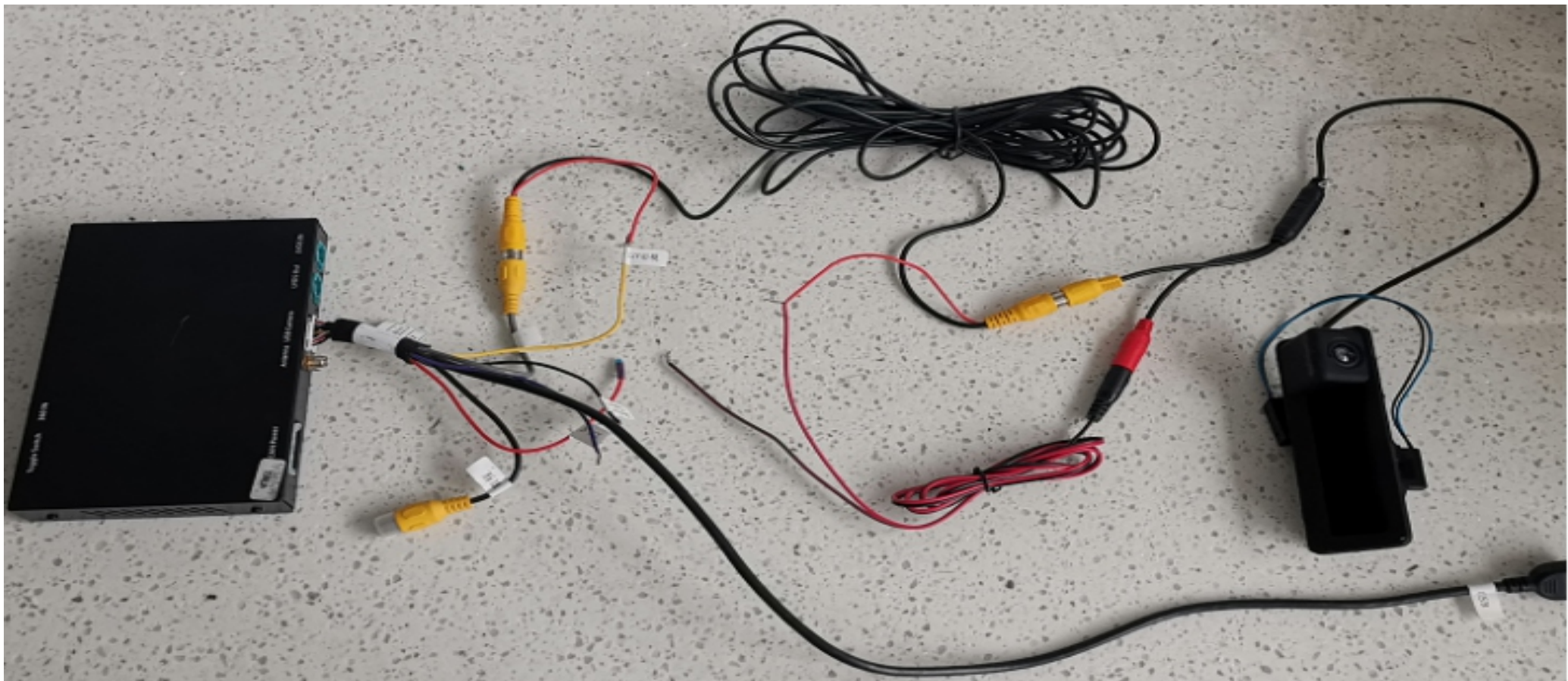
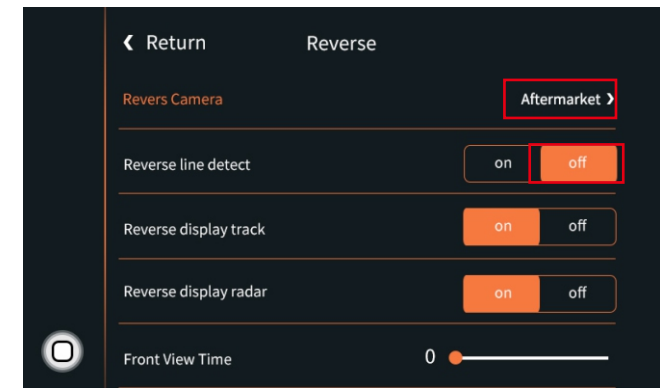
Connect to aux port



# Reverse camera wiring connection and settings

## Automatic transmission

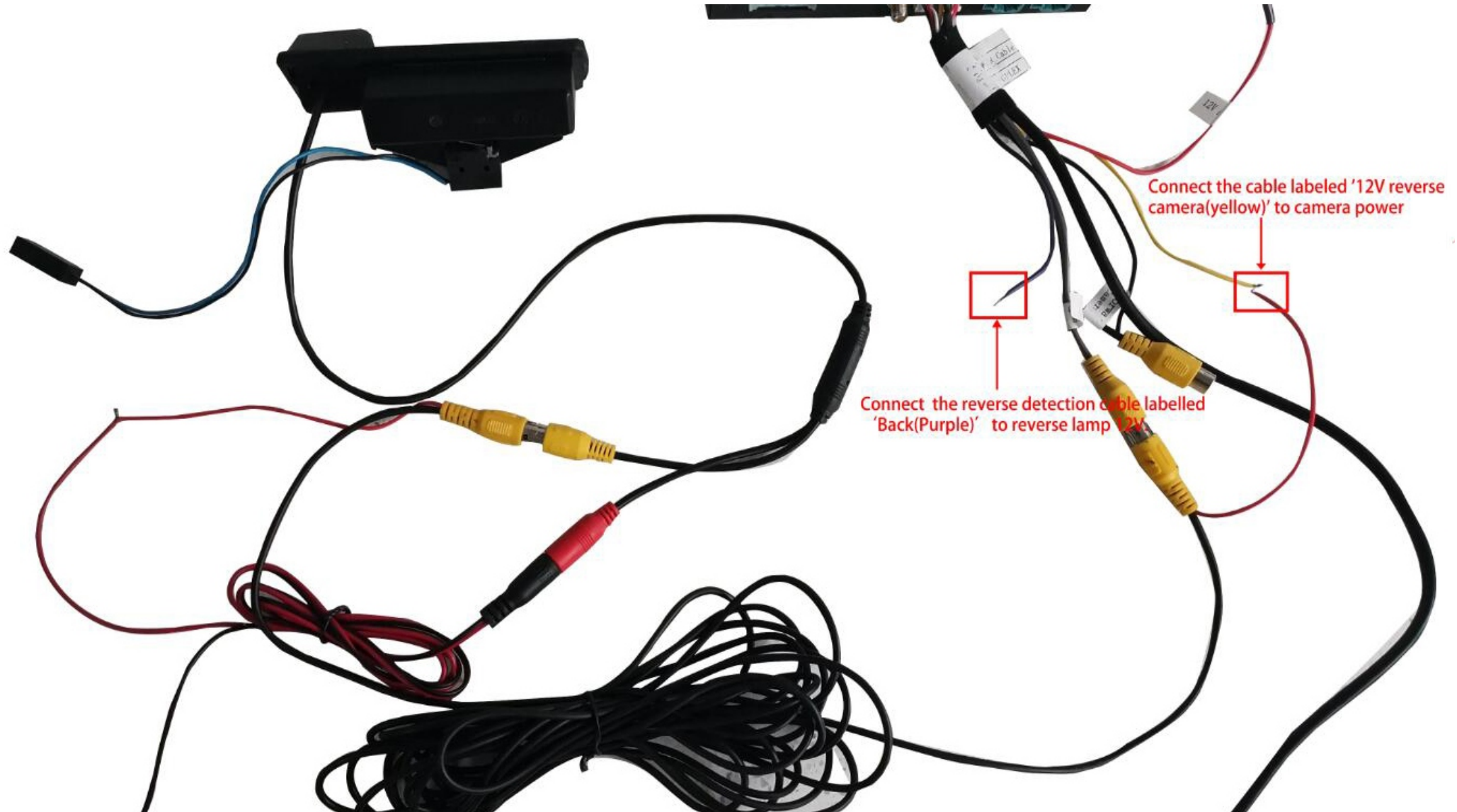
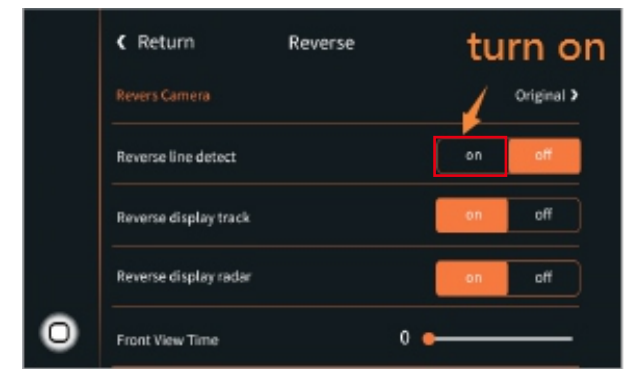
1. Connect the reverse camera to CVBS OUT labeled 'Reverse camera'
2. Connect the cable labeled '12V reverse camera(yellow)' to camera power
3. Setting → Reverse → Reverse camera → Aftermarket





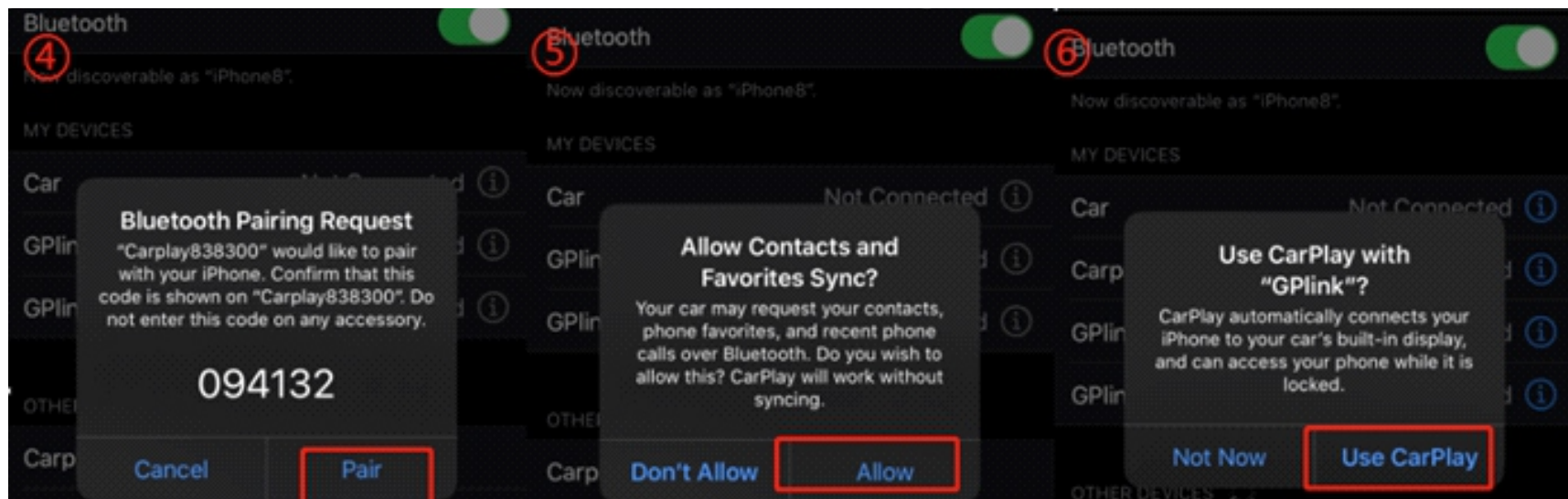
## Munal transmission

1. Connect the reverse camera to CVBS OUT labeled 'Reverse camera'
2. Setting → Reverse → Reverse camera → Aftermarket



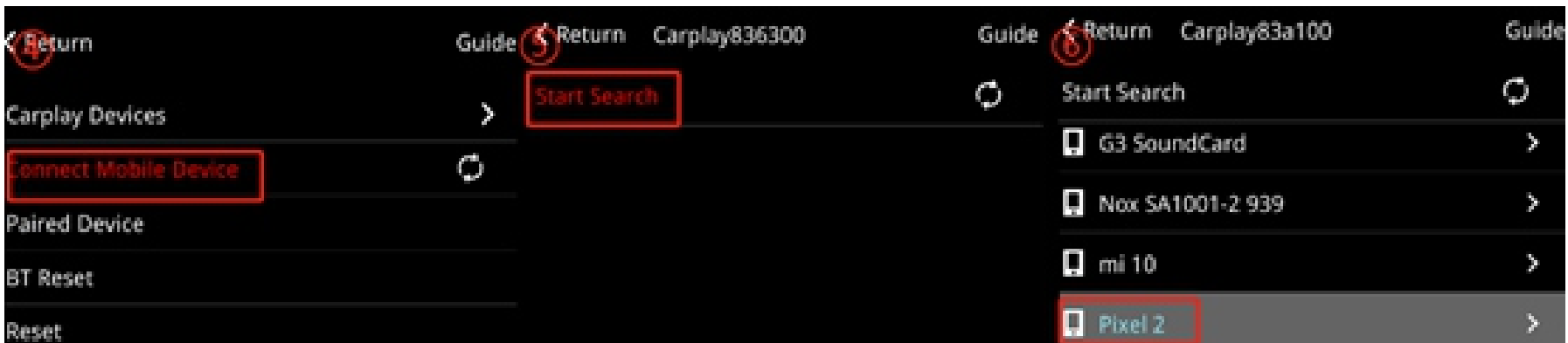
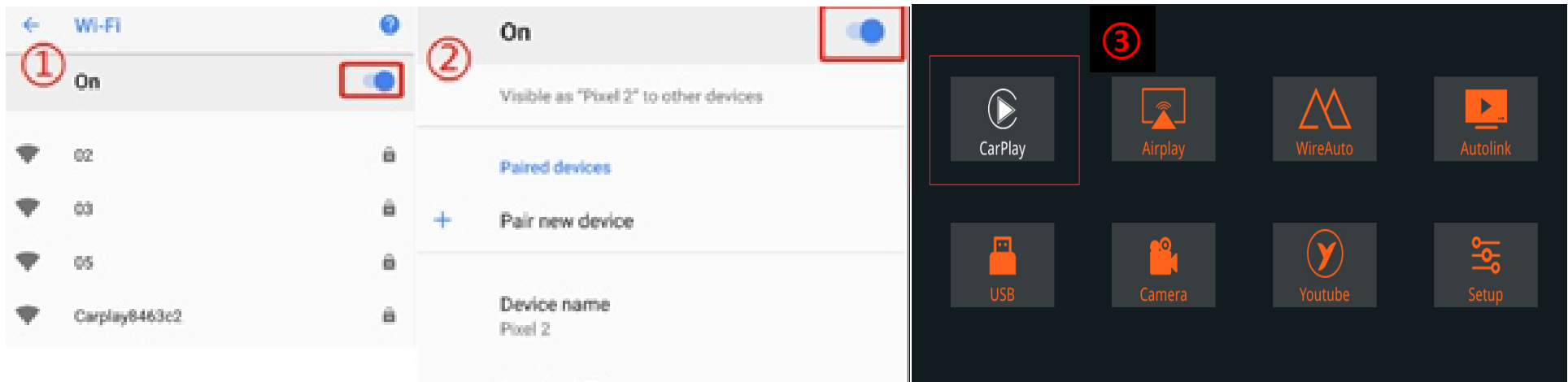
# Wireless carplay connection

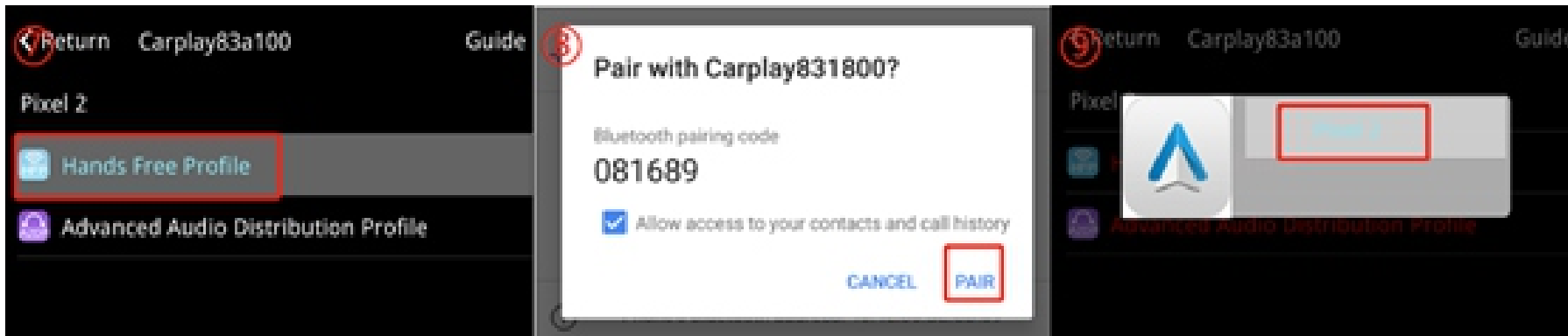
1. Turn on WIFI (Fig.1)
2. Turn on Bluetooth (Fig.2), and connect Carplay's bluetooth (Fig.3/4)
3. After the bluetooth connection is completed, the following prompts will pop up, click 'Allow-Use carplay' (Fig.5/6)



# Wireless Android auto connection

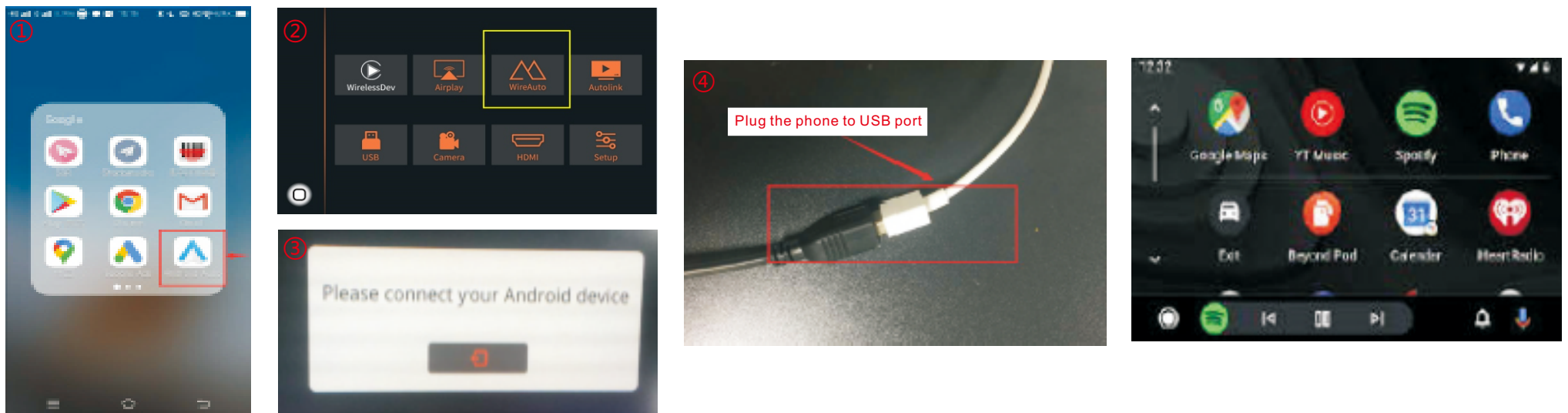
1. Turn on WIFI (Fig.1)
2. Turn on Bluetooth (Fig.2)
3. Enter the Wireless Dev APP(Fig.3 )
4. Search the bluetooth of phone(Fig.4 / 5 /6)
5. Choose any one of the options on the car end to pair(Fig.7)
6. The pairing request pops up on the phone, select 'pair' (Fig.8/9)





## Wired Android auto connection

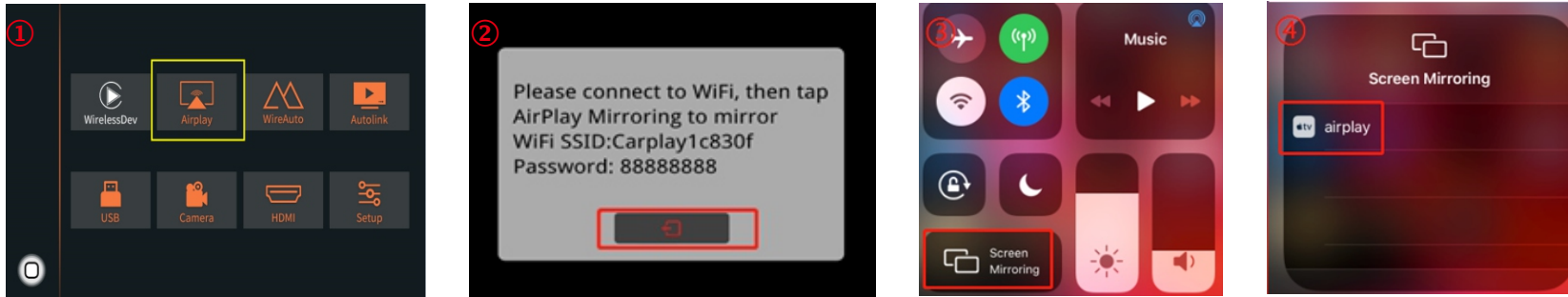
1. Download Android auto APP on Android phone(Fig.1).
2. Click 'WireAuto' icon(Fig.2), the prompt 'Please connect your Android device' will pop up(Fig.3).
3. Plug your phone to USB port. then it will enter Android auto automatically(Fig.4).



## Wireless Airplay connection

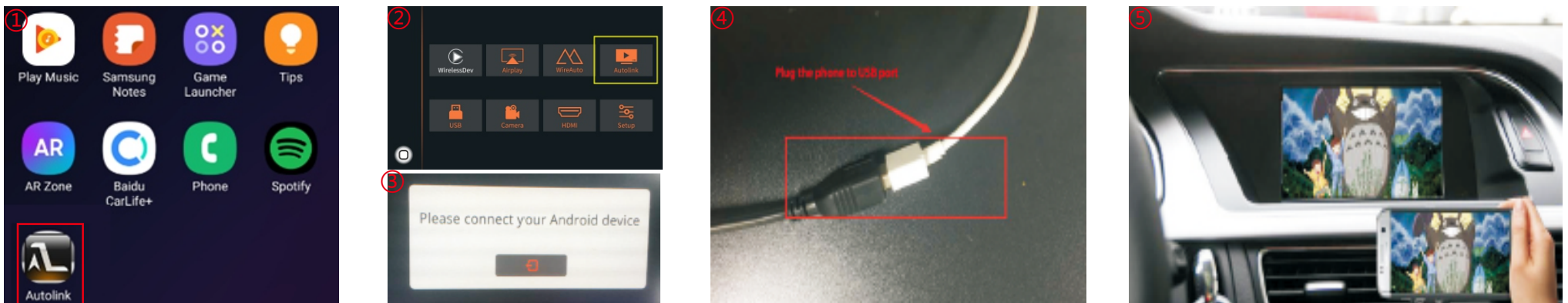
1. Click 'Airplay' icon first (Fig.1), the pairing information with the phone will be displayed (Fig.2)
2. Search wifi signal of Airplay and connect
3. Turn on Airplay (Fig3/4)

**Note: If you have connected Carplay before, please disconnect Carplay wifi first.**



## Wired Autolink connection

1. Download Android auto APP on your Android phone and turn on all the prompt permissions of this APP (Fig.1).
2. Click 'Autolink' icon (Fig.2), the prompt 'Please connect your Android device' will pop up (Fig.3).
3. Plug your phone to USB port (Fig.4). It will enter Android auto automatically (Fig.5).



# Original buttons



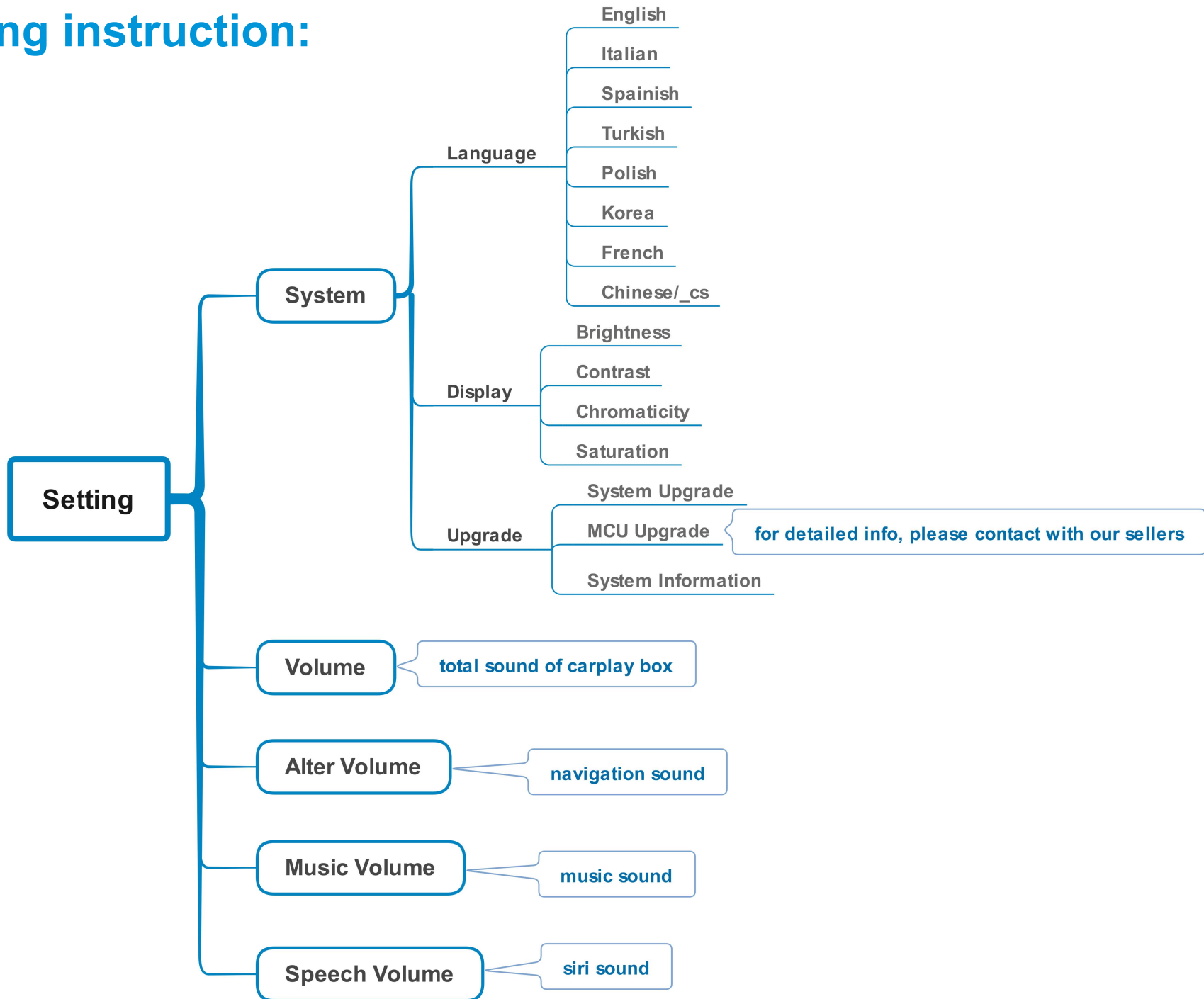
**BMW i-Drive Button**

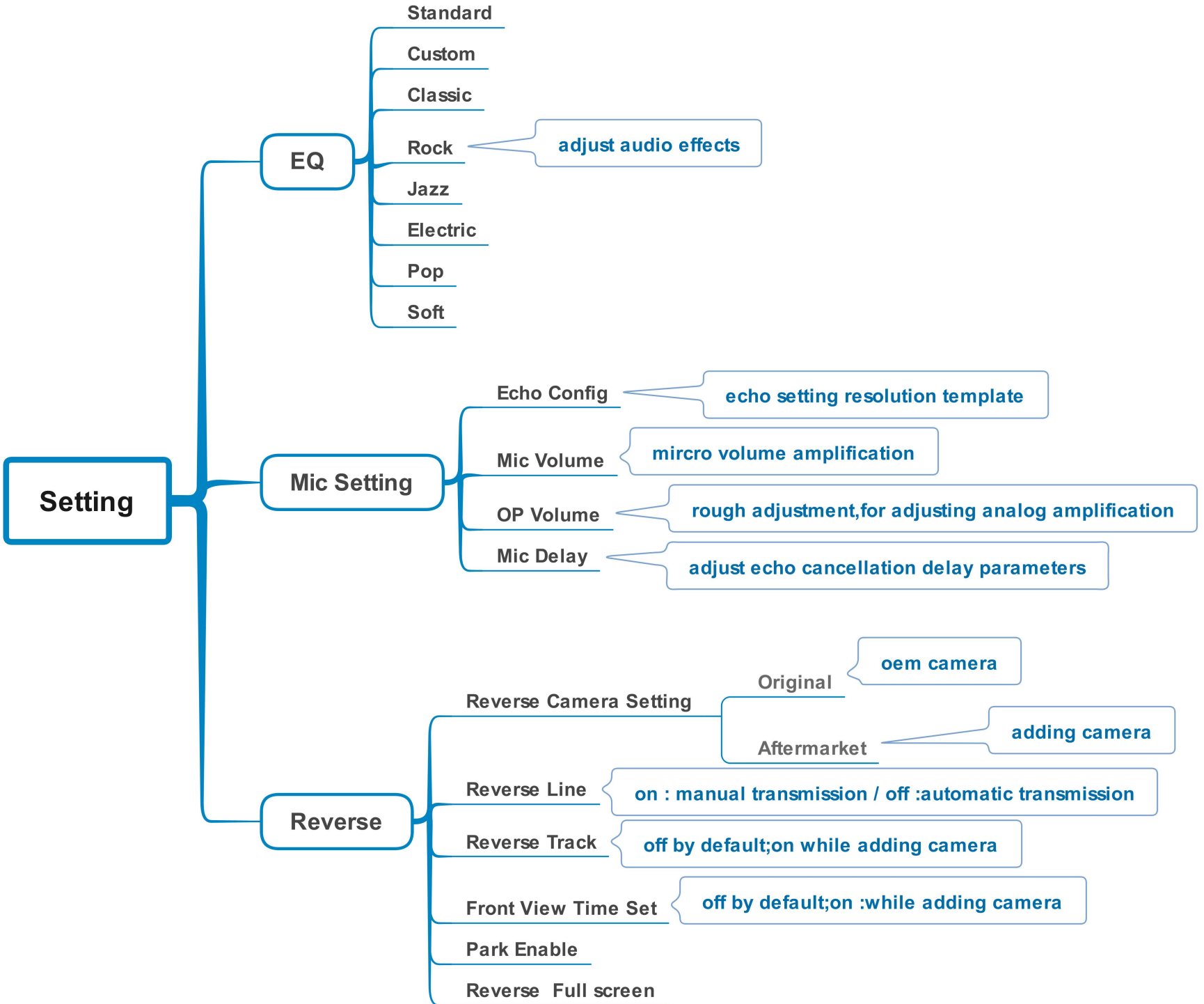


**Steering Wheel Buttons**

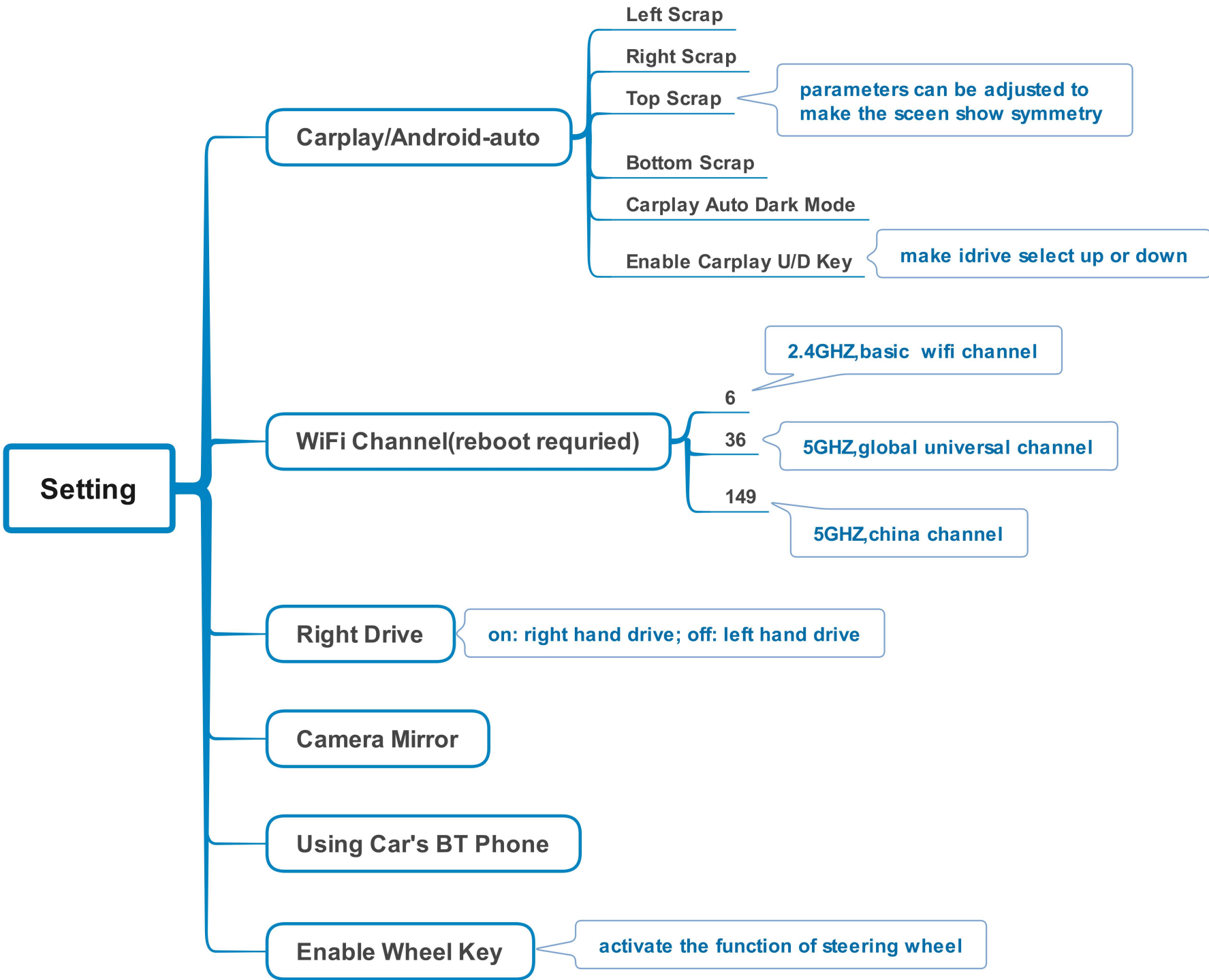
Button	Function	Operation	Remarks
1 MENU	System switching	Long press the button for 3 seconds	OEM ↔ CarPlay
2 Back	Go back	Press the button short time	Apple Car Play Function
	Restart	Press the button 5 seconds	Google Android Auto
3 Dial	Move the pointer Left or Right	Turn the dial Move Left or Right	You can use this function when you get in trouble
			Apple Car Play Function
Dial	Move the pointer Up or Down	Move the Dial Long time	Google Android Auto
			Apple Car Play Function
4	Ok key	Short pures to choose Press the button 5 seconds to activate siri	Google Android Auto
			Apple Car Play Function
5	Volume adjustment	Press to increase/decrease the volume	Apple Car Play Function
			Google Android Auto
6 	"Siri" "Google Assistant"	Press the button 3 seconds	Apple Car Play Function
			Google Android Auto

# Setting instruction:









# FAQ

1.Q: What need to be paid attention to during installation?

- A: 1) Make sure that the carplay box is compatible with the installed model, and check whether the label of box matches with the car model  
2) Power off during installation  
3) After the installation is complete, it is best to lock the car for a few minutes to turn it on, wait until the running test is normal, then restore the car

2.Q: While switching to carplay, the screen displays no signal,yellow screen, abnormal screen or no response?

- A: 1) Check whether the wiring is connected according to the wiring diagram  
2) If the wiring connection is normal but the display is not normal, check if the pins of the lvds cable ports are bent or not in contact, you need to re-plug it  
3) Check whether the dip switch code is correct, after each change, re-plug the box's can power cable  
4) If the dip switch code and wiring connection are normal after inspection, box still switches to the black screen, contact with the saler for a solution



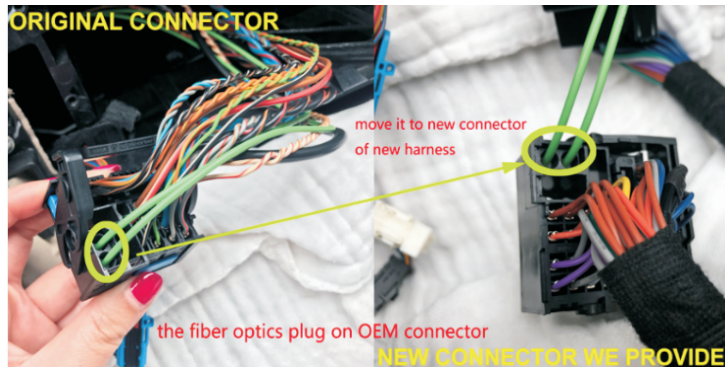
## Special tips:

- (1)The original car's lvds cable should be connected to the lvds out cable labeled"LVDS-OUT- CIC" from out port of the carplay box and the screen port,lvds cable labeled"LVDS-CIC-C19"connected to in port of box.
- (2)When connecting lvds cable, you need to align the position of the interface, otherwise a yellow screen will appear(Fig.1)
- (3)If you cannot succeed by one of the three methods,try to use other method
- (4)If you have checked that the cables are indeed connected correctly, you should consider whether it the lvds cable problem,please contact with the saler

3.Q: I don't have sound when I connect carplay, what can I do?

A: 1) Connect fiber cable

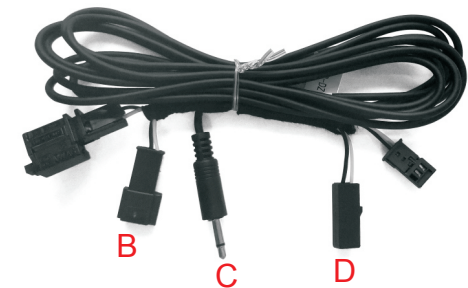
- 2) Set AUX on OEM system, ensure that the Bluetooth signal connection between the mobile phone and the original car is disconnected.
- 3) If there is no sound after step 1/2, connect AUX cable to AUX port of armrest box



4.Q: My car has OEM microphone, but it can't work, what can I do?

A: Please use the following cable to connect to OEM microphone.

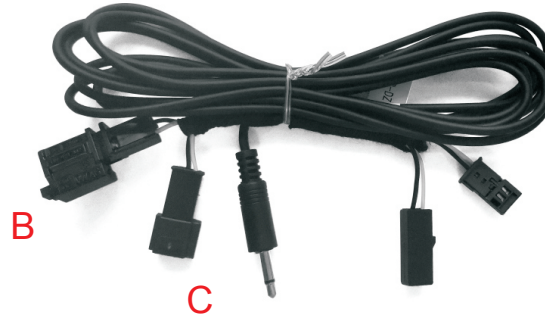
- 1) Connect A to C
- 2) Unplug blue connectors and place mic tap cable in between the connector with microphone on it and the main wiring harness coming from the roof. (B/D need to be connected)



5.Q:I don't have OEM microphone, how to connect external microphone?

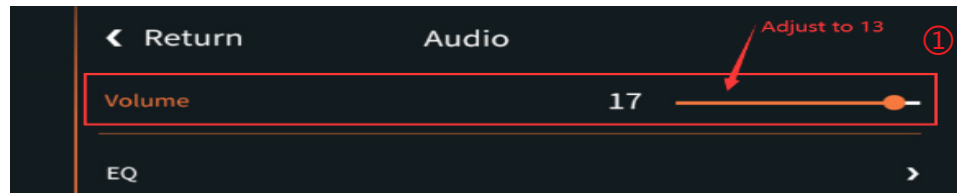
A: You can do as following solutions.

- 1)Connect A with C, B with D.
- 2) Set pin7 to ON, and restart



6.Q:When I call someone, he can hear himself, how to do?

- A:1) Adjust the volume of the original car to normal use
- 2) Turn the volume in 'audio' setting to 13(Fig.1)



- 3) Turn the 'Microphone Volume' to 12
- 4) 'Microphone OP' tune from 0 until no echo is heard
- 5) Adjust 'AEC quality' to 2
- 6) If the caller hears the echo interval for a long time, fine-tune the 'Microphone delay
- 7) If the caller hears a small voice, you can fine-tune the 'Microphone Volume' and 'Microphone PGA'

7.Q: Solutions to not being able to connect with carplay?

A: can try to use the solutions below separately or together

- 1) Click on carplay bluetooth or wifi on the mobile phone
- 2) At the same time, clear the Bluetooth devices on the mobile phone and the car, and then pair and connect
- 3) Go to WirelessDev to reset the Bluetooth, and then pair and (Fig.1)



- 4) Restore the mobile network to the mobile phone
- 5) Check whether the carplay on the mobile phone is turned on (Fig.2)
- 6) Siri permissions are all turned on(Fig.3)
- 7) If necessary, check the antenna (whether it is broken, or attached to the metal, stay away from the box)

8. Q: I installed CarPlay, but the button on the steering wheel can't

work? A: 1) Set the setting 'Enable wheel key' to ON (Fig. 1)

2) Short press the voice button or long press 5s the OK button on the drive knob to activate Siri

9. Q: Siri function can not be used

A: 1) Check whether you have turned the Siri access permissions on iPhone, turn all the options on

2) Turn the function of steering wheel on in CarPlay switch page setup

3) If you can activate Siri but Siri can't receive the command, please check whether the mic works first. If no problem with mic, check the Bluetooth of iPhone, disconnect it from the original car Bluetooth

